

Product datasheet for **TA312458**

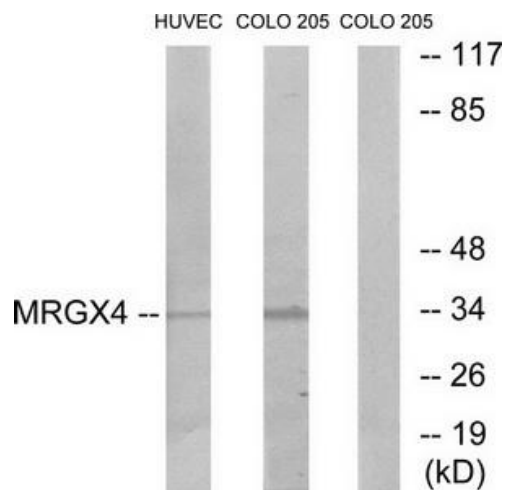
MRGPRX4 Rabbit Polyclonal Antibody

Product data:

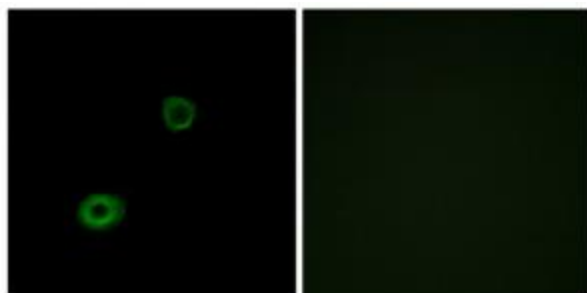
Product Type:	Primary Antibodies
Applications:	IF, WB
Recommended Dilution:	WB: 1:500~1:3000, IF: 1:100~1:500, ELISA: 1:40000
Reactivity:	Human
Host:	Rabbit
Isotype:	IgG
Clonality:	Polyclonal
Immunogen:	The antiserum was produced against synthesized peptide derived from C-terminal of human MRGX4.
Formulation:	Phosphate buffered saline (without Mg ²⁺ and Ca ²⁺), pH 7.4, 150mM NaCl, 0.02% sodium azide and 50% glycerol.
Concentration:	lot specific
Purification:	The antibody was affinity-purified from rabbit antiserum by affinity-chromatography using epitope-specific immunogen.
Conjugation:	Unconjugated
Storage:	Store at -20°C as received.
Stability:	Stable for 12 months from date of receipt.
Gene Name:	MAS related GPR family member X4
Database Link:	NP_473373 Entrez Gene 117196 Human Q96LA9
Synonyms:	GPCR; MRGX4; SNSR6
Note:	MRGX4 antibody detects endogenous levels of total MRGX4 protein.
Protein Families:	Druggable Genome, GPCR, Transmembrane



[View online »](#)

Product images:


Western blot analysis of extracts from HUVEC cells and COLO cells, using MRGX4 antibody. The lane on the right is treated with the synthesized peptide.



Immunofluorescence analysis of A549 cells, using MRGX4 antibody. The picture on the right is treated with the synthesized peptide.