

Product datasheet for **TA312451**

Caspase 8 (CASP8) Rabbit Polyclonal Antibody

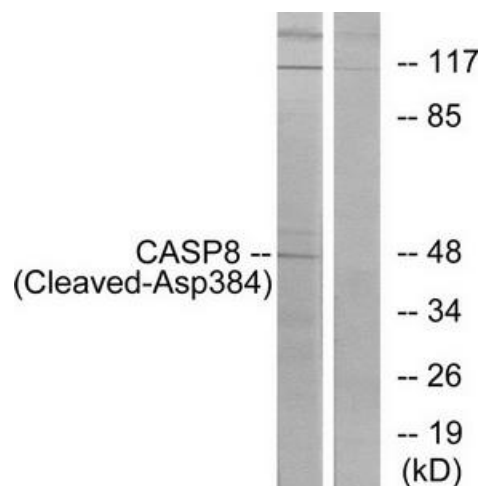
Product data:

Product Type:	Primary Antibodies
Applications:	WB
Recommended Dilution:	WB: 1:500~1:3000, ELISA: 1:40000
Reactivity:	Human
Host:	Rabbit
Isotype:	IgG
Clonality:	Polyclonal
Immunogen:	The antiserum was produced against synthesized peptide derived from human CASP8.
Formulation:	Phosphate buffered saline (without Mg ²⁺ and Ca ²⁺), pH 7.4, 150mM NaCl, 0.02% sodium azide and 50% glycerol.
Concentration:	lot specific
Purification:	The antibody was affinity-purified from rabbit antiserum by affinity-chromatography using epitope-specific immunogen.
Conjugation:	Unconjugated
Storage:	Store at -20°C as received.
Stability:	Stable for 12 months from date of receipt.
Gene Name:	caspase 8
Database Link:	NP_203519 Entrez Gene 841 Human Q14790
Synonyms:	ALPS2B; CAP4; Casp-8; FLICE; MACH; MCH5
Note:	CASP8 (Cleaved-Asp384) antibody detects endogenous levels of fragment of activated CASP8 resulting from cleavage adjacent to Asp384.
Protein Families:	Druggable Genome, Protease
Protein Pathways:	Alzheimer's disease, Apoptosis, Huntington's disease, NOD-like receptor signaling pathway, p53 signaling pathway, Pathways in cancer, RIG-I-like receptor signaling pathway, Toll-like receptor signaling pathway, Viral myocarditis



[View online »](#)

Product images:



Western blot analysis of extracts from 293 cells, treated with etoposide (25uM, 1 hour), using CASP8 (Cleaved-Asp384) antibody. The lane on the right is treated with the synthesized peptide.