

## Product datasheet for **TA312442**

### Caspase 3 (CASP3) Rabbit Polyclonal Antibody

#### Product data:

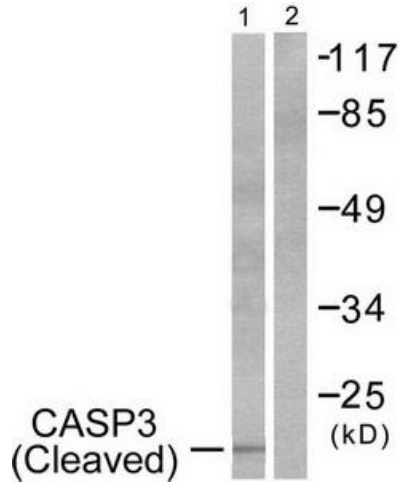
|                       |  |
|-----------------------|--|
| Product Type:         | Primary Antibodies   |
| Applications:         | IHC, WB  |
| Recommended Dilution: | WB: 1:500~1:3000, IHC: 1:50~1:100, ELISA: 1:20000  |
| Reactivity:           | Human, Mouse, Rat  |
| Host:                 | Rabbit   |
| Isotype:              | IgG  |
| Clonality:            | Polyclonal   |
| Immunogen:            | The antiserum was produced against synthesized peptide derived from human Caspase 3.   |
| Formulation:          | Phosphate buffered saline (without Mg <sup>2+</sup> and Ca <sup>2+</sup> ), pH 7.4, 150mM NaCl, 0.02% sodium azide and 50% glycerol.                                       |
| Concentration:        | lot specific   |
| Purification:         | The antibody was affinity-purified from rabbit antiserum by affinity-chromatography using epitope-specific immunogen.  |
| Conjugation:          | Unconjugated   |
| Storage:              | Store at -20°C as received.  |
| Stability:            | Stable for 12 months from date of receipt.   |
| Gene Name:            | caspase 3  |
| Database Link:        | <a href="#">NP_116786</a><br><a href="#">Entrez Gene 12367 Mouse</a> <a href="#">Entrez Gene 25402 Rat</a> <a href="#">Entrez Gene 836 Human</a><br><a href="#">P42574</a> |
| Synonyms:             | CPP32; CPP32B; SCA-1   |
| Note:                 | Caspase 3 (cleaved-Asp175) antibody detects endogenous levels of fragment of activated Caspase 3 resulting from cleavage adjacent to Asp175.                               |
| Protein Families:     | Druggable Genome, ES Cell Differentiation/IPS, Protease  |



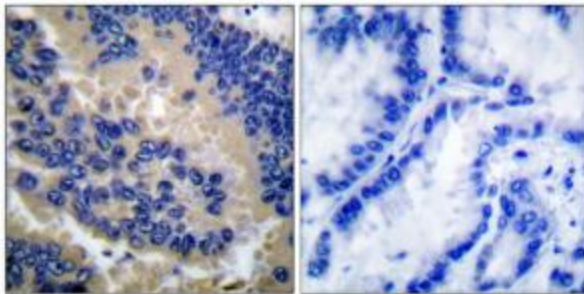
[View online »](#)

**Protein Pathways:**

Alzheimer's disease, Amyotrophic lateral sclerosis (ALS), Apoptosis, Colorectal cancer, Epithelial cell signaling in Helicobacter pylori infection, Huntington's disease, MAPK signaling pathway, Natural killer cell mediated cytotoxicity, p53 signaling pathway, Parkinson's disease, Pathways in cancer, Viral myocarditis

**Product images:**


Western blot analysis of extracts from 293 cells, treated with Etoposide (25uM, 60mins), using Caspase 3 (cleaved-Asp175) antibody. The lane on the right is treated with the synthesized peptide.



Immunohistochemical analysis of paraffin-embedded human lung carcinoma tissue using Caspase 3 (cleaved-Asp175) antibody. The picture on the right is treated with the synthesized peptide.