

## Product datasheet for **TA312433**

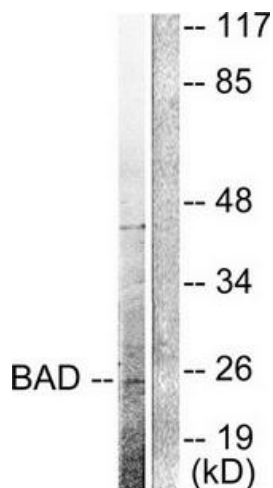
### Bad Rabbit Polyclonal Antibody

#### Product data:

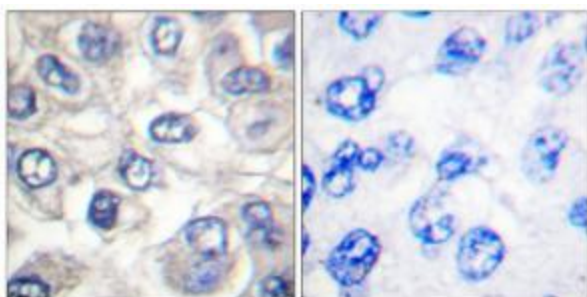
Product Type:	Primary Antibodies
Applications:	IHC, WB
Recommended Dilution:	WB: 1:300~1000, IHC: 1:50~100, ELISA: 1:20000
Reactivity:	Mouse, Rat
Host:	Rabbit
Isotype:	IgG
Clonality:	Polyclonal
Immunogen:	The antiserum was produced against synthesized peptide derived from mouse BAD.
Formulation:	Phosphate buffered saline (without Mg <sup>2+</sup> and Ca <sup>2+</sup> ), pH 7.4, 150mM NaCl, 0.02% sodium azide and 50% glycerol.
Concentration:	lot specific
Purification:	The antibody was affinity-purified from rabbit antiserum by affinity-chromatography using epitope-specific immunogen.
Conjugation:	Unconjugated
Storage:	Store at -20°C as received.
Stability:	Stable for 12 months from date of receipt.
Gene Name:	BCL2-associated agonist of cell death
Database Link:	<a href="#">NP_031548</a> <a href="#">Entrez Gene 64639 Rat</a> <a href="#">Entrez Gene 12015 Mouse</a> <a href="#">Q61337</a>
Synonyms:	BBC2; BBC6; Bcl2-L-8; BCL2L8
Note:	BAD (Cleaved-Asp71) antibody detects endogenous levels of fragment of activated BAD resulting from cleavage adjacent to Asp71.



[View online »](#)

**Product images:**

Western blot analysis of extracts from 293 cells, treated with Etoposide (25uM, 60mins), using BAD (Cleaved-Asp71) antibody (#TA312433). The lane on the right is treated with the synthesized peptide.



Immunohistochemical analysis of paraffin-embedded human breast carcinoma tissue using BAD (Cleaved-Asp71) antibody (#TA312433). The picture on the right is treated with the synthesized peptide.