

Product datasheet for **TA312432**

IRF5 Rabbit Polyclonal Antibody

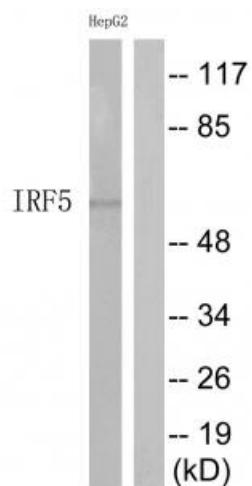
Product data:

Product Type:	Primary Antibodies
Applications:	WB
Recommended Dilution:	WB: 1:500~1:3000, ELISA: 1:10000
Reactivity:	Human, Mouse, Rat
Host:	Rabbit
Isotype:	IgG
Clonality:	Polyclonal
Immunogen:	The antiserum was produced against synthesized peptide derived from Internal of human IRF5.
Formulation:	Phosphate buffered saline (without Mg ²⁺ and Ca ²⁺), pH 7.4, 150mM NaCl, 0.02% sodium azide and 50% glycerol.
Concentration:	lot specific
Purification:	The antibody was affinity-purified from rabbit antiserum by affinity-chromatography using epitope-specific immunogen.
Conjugation:	Unconjugated
Storage:	Store at -20°C as received.
Stability:	Stable for 12 months from date of receipt.
Gene Name:	interferon regulatory factor 5
Database Link:	NP_116032 Entrez Gene 27056 MouseEntrez Gene 296953 RatEntrez Gene 3663 Human Q13568
Synonyms:	SLEB10
Note:	IRF5 Antibody detects endogenous levels of total IRF5 protein.
Protein Families:	Transcription Factors
Protein Pathways:	Toll-like receptor signaling pathway



[View online »](#)

Product images:



Western blot analysis of extracts from HepG2 cells, using IRF5 Antibody. The lane on the right is treated with the synthesized peptide.