

## Product datasheet for TA312431

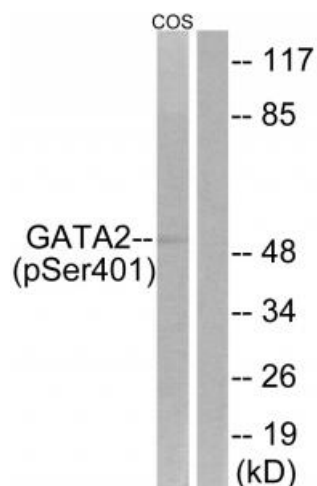
### GATA2 Rabbit Polyclonal Antibody

#### Product data:

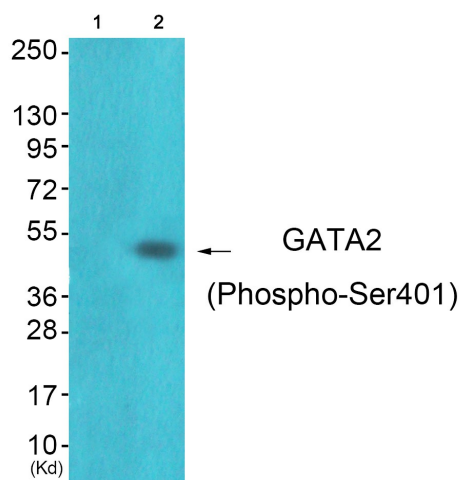
Product Type:	Primary Antibodies
Applications:	WB
Recommended Dilution:	WB: 1:500~1:3000, ELISA: 1:1000
Reactivity:	Human, Mouse
Modifications:	Phospho-specific
Host:	Rabbit
Isotype:	IgG
Clonality:	Polyclonal
Immunogen:	The antiserum was produced against synthesized phosphopeptide derived from human GATA2 around the phosphorylation site of serine 401 (K-M-SP-N-K).
Formulation:	Phosphate buffered saline (without Mg <sup>2+</sup> and Ca <sup>2+</sup> ), pH 7.4, 150mM NaCl, 0.02% sodium azide and 50% glycerol.
Concentration:	lot specific
Purification:	The antibody was affinity-purified from rabbit antiserum by affinity-chromatography using epitope-specific immunogen.
Conjugation:	Unconjugated
Storage:	Store at -20°C as received.
Stability:	Stable for 12 months from date of receipt.
Gene Name:	GATA binding protein 2
Database Link:	<a href="#">NP_116027</a> <a href="#">Entrez Gene 14461 Mouse</a> <a href="#">Entrez Gene 2624 Human</a> <a href="#">P23769</a>
Synonyms:	DCML; IMD21; MONOMAC; NFE1B
Note:	GATA2 (Phospho-Ser401) antibody detects endogenous levels of GATA2 only when phosphorylated at serine 401.
Protein Families:	Adult stem cells, Druggable Genome, ES Cell Differentiation/IPS, Transcription Factors



[View online »](#)

**Product images:**


Western blot analysis of extracts from COS-7 cells, treated with TNF (20ng/ml, 5mins), using GATA2 (Phospho-Ser401) antibody. The lane on the right is treated with the synthesized peptide.



Western blot analysis of extracts from JK cells (Lane 2), using GATA2 (Phospho-Ser401) Antibody. The lane on the left is treated with synthesized peptide.