

## Product datasheet for **TA312430**

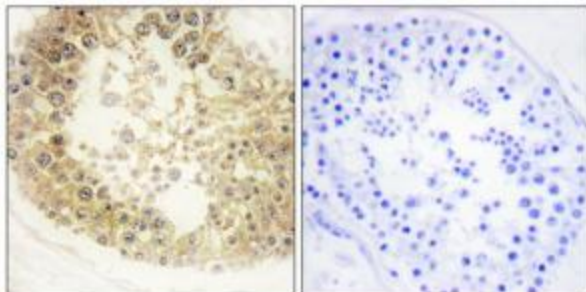
### ECRG4 Rabbit Polyclonal Antibody

#### Product data:

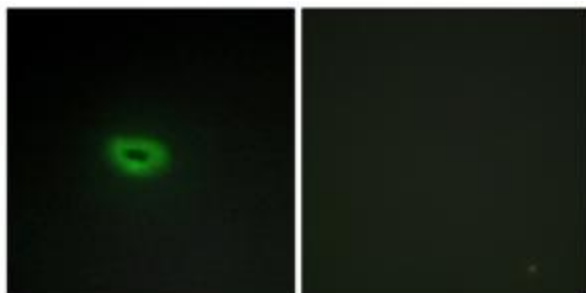
Product Type:	Primary Antibodies
Applications:	IF, IHC
Recommended Dilution:	IHC: 1:50~1:100, IF: 1:100~1:500, ELISA: 1:40000
Reactivity:	Human, Mouse
Host:	Rabbit
Isotype:	IgG
Clonality:	Polyclonal
Immunogen:	The antiserum was produced against synthesized peptide derived from internal of human ECRG4.
Formulation:	Phosphate buffered saline (without Mg <sup>2+</sup> and Ca <sup>2+</sup> ), pH 7.4, 150mM NaCl, 0.02% sodium azide and 50% glycerol.
Concentration:	lot specific
Purification:	The antibody was affinity-purified from rabbit antiserum by affinity-chromatography using epitope-specific immunogen.
Conjugation:	Unconjugated
Storage:	Store at -20°C as received.
Stability:	Stable for 12 months from date of receipt.
Gene Name:	chromosome 2 open reading frame 40
Database Link:	<a href="#">NP_115787</a> <a href="#">Entrez Gene 84417 Human</a> <a href="#">Q9H1Z8</a>
Synonyms:	ECRG4
Note:	ECRG4 antibody detects endogenous levels of total ECRG4 protein.
Protein Families:	Secreted Protein, Transmembrane



[View online »](#)

**Product images:**

Immunohistochemistry analysis of paraffin-embedded human testis tissue, using ECRG4 antibody. The picture on the right is treated with the synthesized peptide.



Immunofluorescence analysis of A549 cells, using ECRG4 antibody. The picture on the right is treated with the synthesized peptide.