

Product datasheet for **TA312428**

DARPP32 (PPP1R1B) Rabbit Polyclonal Antibody

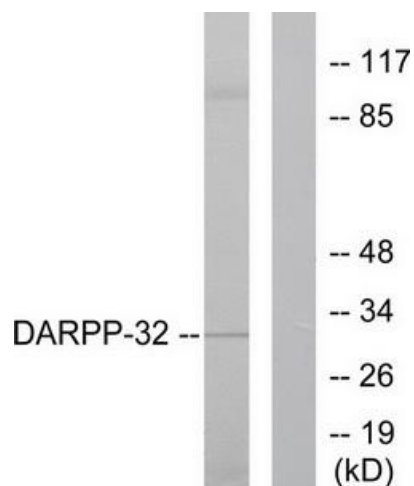
Product data:

Product Type:	Primary Antibodies
Applications:	IHC, WB
Recommended Dilution:	WB: 1:500~1000, IHC: 1:50~100, ELISA: 1:40000
Reactivity:	Human, Mouse, Rat
Host:	Rabbit
Isotype:	IgG
Clonality:	Polyclonal
Immunogen:	The antiserum was produced against synthesized non-phosphopeptide derived from human DARPP-32 around the phosphorylation site of threonine 75 (A-Y-TP-P-P).
Formulation:	Phosphate buffered saline (without Mg ²⁺ and Ca ²⁺), pH 7.4, 150mM NaCl, 0.02% sodium azide and 50% glycerol.
Concentration:	lot specific
Purification:	The antibody was affinity-purified from rabbit antiserum by affinity-chromatography using epitope-specific immunogen.
Conjugation:	Unconjugated
Storage:	Store at -20°C as received.
Stability:	Stable for 12 months from date of receipt.
Gene Name:	protein phosphatase 1 regulatory inhibitor subunit 1B
Database Link:	NP_115568 Entrez Gene 19049 Mouse Entrez Gene 360616 Rat Entrez Gene 84152 Human Q9UD71
Synonyms:	DARPP-32; DARPP32
Note:	DARPP-32 (Ab-75) antibody detects endogenous levels of total DARPP-32 protein.
Protein Families:	Druggable Genome

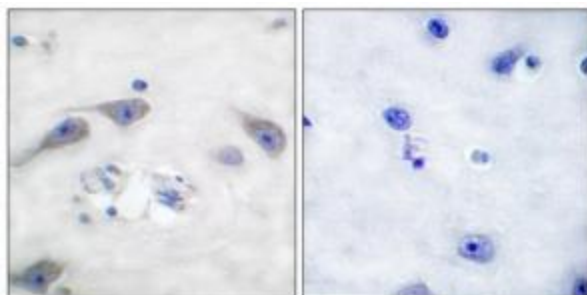


[View online »](#)

Product images:



Western blot analysis of extracts from 293 cells treated with EGF (200ng/ml, 30min), using DARPP-32 (Ab-75) antibody (#TA312428, Line 1 and 2). The lane on the right is treated with the synthesized peptide.



Immunohistochemical analysis of paraffin-embedded human brain tissue using DARPP-32 (Ab-75) antibody (#TA312428). The picture on the right is treated with the synthesized peptide.