

Product datasheet for **TA312418**

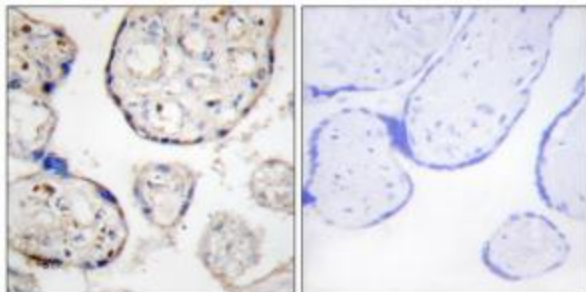
STEAP4 Rabbit Polyclonal Antibody

Product data:

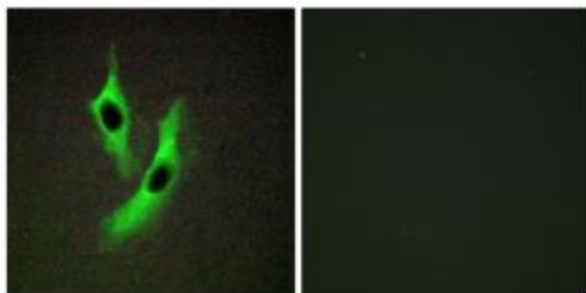
Product Type:	Primary Antibodies
Applications:	IF, IHC
Recommended Dilution:	IHC: 1:50~1:100, IF: 1:100~1:500, ELISA: 1:20000
Reactivity:	Human
Host:	Rabbit
Isotype:	IgG
Clonality:	Polyclonal
Immunogen:	The antiserum was produced against synthesized peptide derived from internal of human STEAP4.
Formulation:	Phosphate buffered saline (without Mg ²⁺ and Ca ²⁺), pH 7.4, 150mM NaCl, 0.02% sodium azide and 50% glycerol.
Concentration:	lot specific
Purification:	The antibody was affinity-purified from rabbit antiserum by affinity-chromatography using epitope-specific immunogen.
Conjugation:	Unconjugated
Storage:	Store at -20°C as received.
Stability:	Stable for 12 months from date of receipt.
Gene Name:	STEAP4 metalloredutase
Database Link:	NP_078912 Entrez Gene 79689 Human Q687X5
Synonyms:	STAMP2; TIARP; TNFAIP9
Note:	STEAP4 antibody detects endogenous levels of total STEAP4 protein.
Protein Families:	Druggable Genome, Transmembrane



[View online »](#)

Product images:

Immunohistochemistry analysis of paraffin-embedded human placenta tissue, using STEAP4 antibody. The picture on the right is treated with the synthesized peptide.



Immunofluorescence analysis of Jurkat cells, using STEAP4 antibody. The picture on the right is treated with the synthesized peptide.