

## Product datasheet for **TA312413**

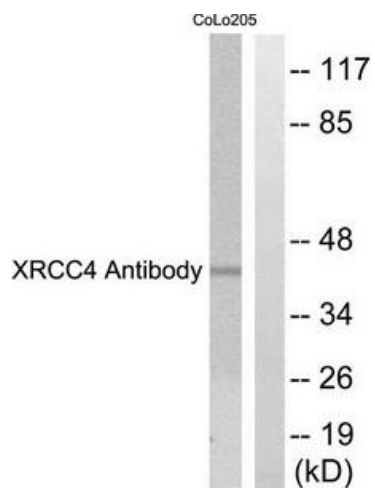
### XRCC4 Rabbit Polyclonal Antibody

#### Product data:

Product Type:	Primary Antibodies
Applications:	WB
Recommended Dilution:	WB: 1:500~1:3000, ELISA: 1:20000
Reactivity:	Human
Host:	Rabbit
Isotype:	IgG
Clonality:	Polyclonal
Immunogen:	The antiserum was produced against synthesized peptide derived from Internal of human XRCC4.
Formulation:	Phosphate buffered saline (without Mg <sup>2+</sup> and Ca <sup>2+</sup> ), pH 7.4, 150mM NaCl, 0.02% sodium azide and 50% glycerol.
Concentration:	lot specific
Purification:	The antibody was affinity-purified from rabbit antiserum by affinity-chromatography using epitope-specific immunogen.
Conjugation:	Unconjugated
Storage:	Store at -20°C as received.
Stability:	Stable for 12 months from date of receipt.
Gene Name:	X-ray repair complementing defective repair in Chinese hamster cells 4
Database Link:	<a href="#">NP_072044</a> <a href="#">Entrez Gene 7518 Human</a> <a href="#">Q13426</a>
Synonyms:	SSMED
Note:	XRCC4 antibody detects endogenous levels of total XRCC4 protein.
Protein Families:	Druggable Genome
Protein Pathways:	Non-homologous end-joining



[View online »](#)

**Product images:**

Western blot analysis of extracts from COLO205 cells, using XRCC4 antibody. The lane on the right is treated with the synthesized peptide.