

Product datasheet for **TA312398**

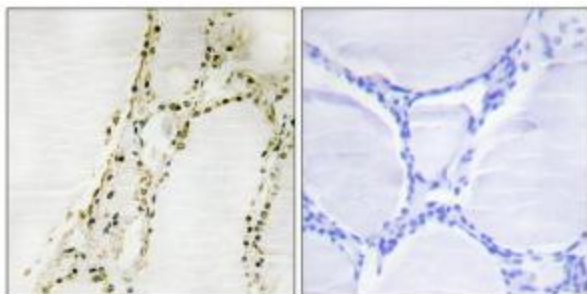
RSK3 (RPS6KA2) Rabbit Polyclonal Antibody

Product data:

Product Type:	Primary Antibodies
Applications:	IHC
Recommended Dilution:	IHC: 1:50~1:100, ELISA: 1:1000
Reactivity:	Human, Mouse
Host:	Rabbit
Isotype:	IgG
Clonality:	Polyclonal
Immunogen:	The antiserum was produced against synthesized peptide derived from internal of human S6K-a2.
Formulation:	Phosphate buffered saline (without Mg ²⁺ and Ca ²⁺), pH 7.4, 150mM NaCl, 0.02% sodium azide and 50% glycerol.
Concentration:	lot specific
Purification:	The antibody was affinity-purified from rabbit antiserum by affinity-chromatography using epitope-specific immunogen.
Conjugation:	Unconjugated
Storage:	Store at -20°C as received.
Stability:	Stable for 12 months from date of receipt.
Gene Name:	ribosomal protein S6 kinase A2
Database Link:	NP_066958 Entrez Gene 20112 Mouse Entrez Gene 6196 Human Q15349
Synonyms:	HU-2; MAPKAPK1C; p90-RSK3; p90RSK2; pp90RSK3; RSK; RSK3; S6K-alpha; S6K-alpha2
Note:	S6K-.2 antibody detects endogenous levels of total S6K-.2 protein.
Protein Families:	Druggable Genome, Protein Kinase
Protein Pathways:	Long-term potentiation, MAPK signaling pathway, mTOR signaling pathway, Neurotrophin signaling pathway, Oocyte meiosis, Progesterone-mediated oocyte maturation



[View online »](#)

Product images:

Immunohistochemistry analysis of paraffin-embedded human thyroid gland tissue, using S6K-a2 antibody. The picture on the right is treated with the synthesized peptide.