

## Product datasheet for **TA312397**

### Claudin 1 (CLDN1) Rabbit Polyclonal Antibody

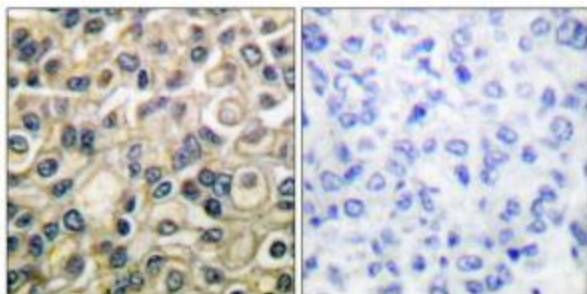
#### Product data:

Product Type:	Primary Antibodies
Applications:	IHC, WB
Recommended Dilution:	WB: 1:500~1:3000, IHC: 1:50~1:100, ELISA: 1:5000
Reactivity:	Human, Mouse, Rat
Host:	Rabbit
Isotype:	IgG
Clonality:	Polyclonal
Immunogen:	The antiserum was produced against synthesized peptide derived from human Claudin 1.
Formulation:	Phosphate buffered saline (without Mg <sup>2+</sup> and Ca <sup>2+</sup> ), pH 7.4, 150mM NaCl, 0.02% sodium azide and 50% glycerol.
Concentration:	lot specific
Purification:	The antibody was affinity-purified from rabbit antiserum by affinity-chromatography using epitope-specific immunogen.
Conjugation:	Unconjugated
Storage:	Store at -20°C as received.
Stability:	Stable for 12 months from date of receipt.
Gene Name:	claudin 1
Database Link:	<a href="#">NP_066924</a> <a href="#">Entrez Gene 12737 Mouse</a> <a href="#">Entrez Gene 65129 Rat</a> <a href="#">Entrez Gene 9076 Human</a> <a href="#">O95832</a>
Synonyms:	CLD1; ILVASC; SEMP1
Note:	Claudin 1 antibody detects endogenous levels of total Claudin 1 protein.
Protein Families:	Transmembrane
Protein Pathways:	Cell adhesion molecules (CAMs), Leukocyte transendothelial migration, Pathogenic Escherichia coli infection, Tight junction

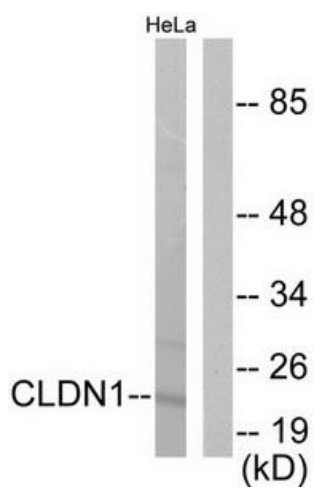


[View online »](#)

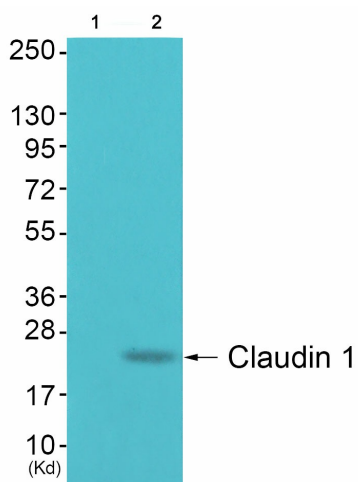
**Product images:**



Immunohistochemical analysis of paraffin-embedded human breast carcinoma tissue using Claudin 1 antibody (#TA312397). The picture on the right is treated with the synthesized peptide.



Western blot analysis of extracts from HeLa cells, using Claudin 1 antibody (#TA312397). The lane on the right is treated with the synthesized peptide.



Western blot analysis of extracts from 293 cells (Lane 2), using Claudin 1 Antibody. The lane on the left is treated with synthesized peptide.