

Product datasheet for **TA312396**

Claudin 1 (CLDN1) Rabbit Polyclonal Antibody

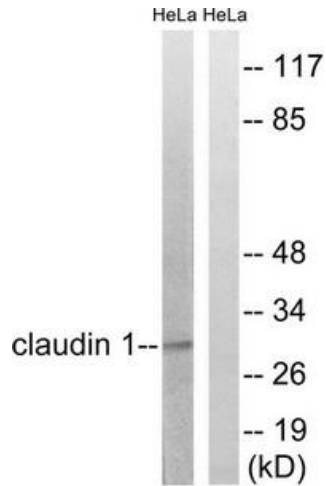
Product data:

Product Type:	Primary Antibodies
Applications:	WB
Recommended Dilution:	WB: 1:500~1:3000, ELISA: 1:20000
Reactivity:	Human, Mouse, Rat
Host:	Rabbit
Isotype:	IgG
Clonality:	Polyclonal
Immunogen:	The antiserum was produced against synthesized non-phosphopeptide derived from human Claudin 1 around the phosphorylation site of tyrosine 210 (G-K-D-YP-V).
Formulation:	Phosphate buffered saline (without Mg ²⁺ and Ca ²⁺), pH 7.4, 150mM NaCl, 0.02% sodium azide and 50% glycerol.
Concentration:	lot specific
Purification:	The antibody was affinity-purified from rabbit antiserum by affinity-chromatography using epitope-specific immunogen.
Conjugation:	Unconjugated
Storage:	Store at -20°C as received.
Stability:	Stable for 12 months from date of receipt.
Gene Name:	claudin 1
Database Link:	NP_066924 Entrez Gene 12737 Mouse Entrez Gene 65129 Rat Entrez Gene 9076 Human O95832
Synonyms:	CLD1; ILVASC; SEMP1
Note:	Claudin 1 (Ab-210) antibody detects endogenous levels of total Claudin 1 protein.
Protein Families:	Transmembrane
Protein Pathways:	Cell adhesion molecules (CAMs), Leukocyte transendothelial migration, Pathogenic Escherichia coli infection, Tight junction

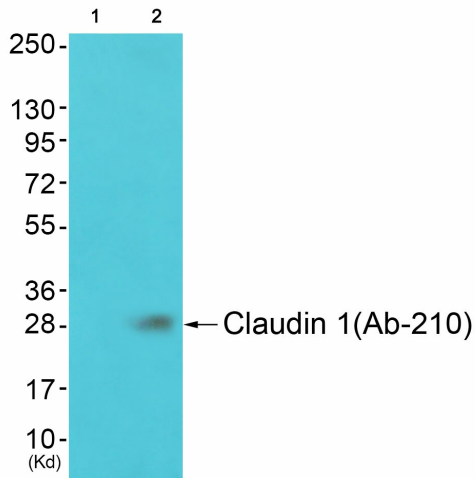


[View online »](#)

Product images:



Western blot analysis of extracts from HeLa cells, treated with Hu (2nM, 24hours), using Claudin 1 (Ab-210) antibody. The lane on the right is treated with the synthesized peptide.



Western blot analysis of extracts from JK cells (Lane 2), using Claudin 1 (Ab-210) Antibody. The lane on the left is treated with synthesized peptide.