

Product datasheet for **TA312393**

PDLIM1 Rabbit Polyclonal Antibody

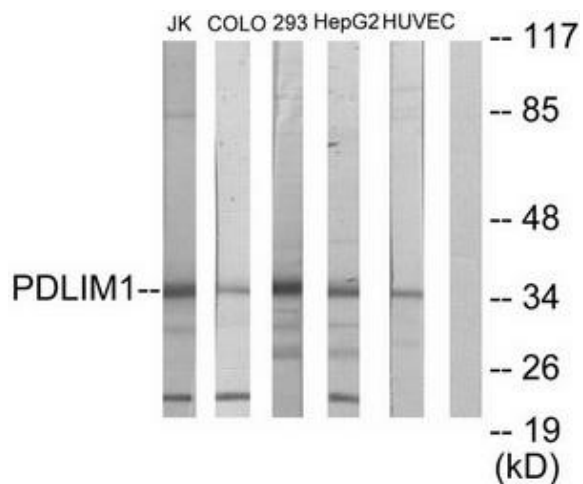
Product data:

Product Type:	Primary Antibodies
Applications:	IF, IHC, WB
Recommended Dilution:	WB: 1:500~1:3000, IHC: 1:50~1:100, IF: 1:100~1:500, ELISA: 1:5000
Reactivity:	Human, Mouse, Rat
Host:	Rabbit
Isotype:	IgG
Clonality:	Polyclonal
Immunogen:	The antiserum was produced against synthesized peptide derived from internal of human PDLIM1.
Formulation:	Phosphate buffered saline (without Mg ²⁺ and Ca ²⁺), pH 7.4, 150mM NaCl, 0.02% sodium azide and 50% glycerol.
Concentration:	lot specific
Purification:	The antibody was affinity-purified from rabbit antiserum by affinity-chromatography using epitope-specific immunogen.
Conjugation:	Unconjugated
Storage:	Store at -20°C as received.
Stability:	Stable for 12 months from date of receipt.
Gene Name:	PDZ and LIM domain 1
Database Link:	NP_066272 Entrez Gene 54132 Mouse Entrez Gene 54133 Rat Entrez Gene 9124 Human O00151
Synonyms:	CLIM1; CLP-36; CLP36; hCLIM1; HEL-S-112
Note:	PDLIM1 antibody detects endogenous levels of total PDLIM1 protein.

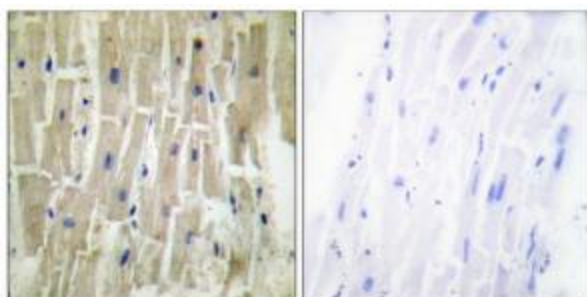


[View online »](#)

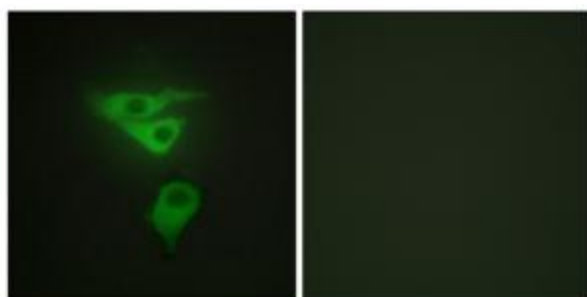
Product images:



Western blot analysis of extracts from Jurkat cells, COLO205 cells, 293 cells, HepG2 cells and HUVEC cells, using PDLIM1 antibody. The lane on the right is treated with the synthesized peptide.



Immunohistochemistry analysis of paraffin-embedded human heart tissue using PDLIM1 antibody. The picture on the right is treated with the synthesized peptide.



Immunofluorescence analysis of HepG2 cells, using PDLIM1 antibody. The picture on the right is treated with the synthesized peptide.