

Product datasheet for **TA312391**

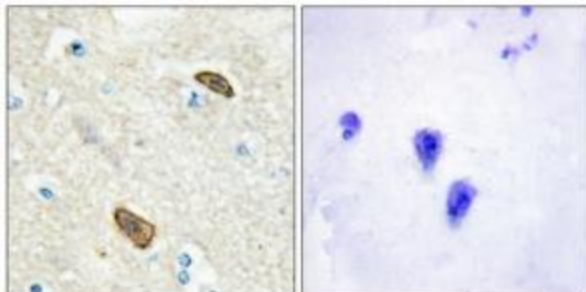
TEM7 (PLXDC1) Rabbit Polyclonal Antibody

Product data:

Product Type:	Primary Antibodies
Applications:	IHC
Recommended Dilution:	IHC: 1:50~1:100, ELISA: 1:20000
Reactivity:	Human
Host:	Rabbit
Isotype:	IgG
Clonality:	Polyclonal
Immunogen:	The antiserum was produced against synthesized peptide derived from Internal of human PLXDC1.
Formulation:	Phosphate buffered saline (without Mg ²⁺ and Ca ²⁺), pH 7.4, 150mM NaCl, 0.02% sodium azide and 50% glycerol.
Concentration:	lot specific
Purification:	The antibody was affinity-purified from rabbit antiserum by affinity-chromatography using epitope-specific immunogen.
Conjugation:	Unconjugated
Storage:	Store at -20°C as received.
Stability:	Stable for 12 months from date of receipt.
Gene Name:	plexin domain containing 1
Database Link:	NP_065138 Entrez Gene 57125 Human Q8IUUK5
Synonyms:	TEM3; TEM7
Note:	PLXDC1 antibody detects endogenous levels of total PLXDC1 protein.
Protein Families:	Druggable Genome, Secreted Protein, Transmembrane



[View online »](#)

Product images:

Immunohistochemical analysis of paraffin-embedded human brain tissue using PLXDC1 antibody. The picture on the right is treated with the synthesized peptide.