

## Product datasheet for **TA312383**

### OTUB1 Rabbit Polyclonal Antibody

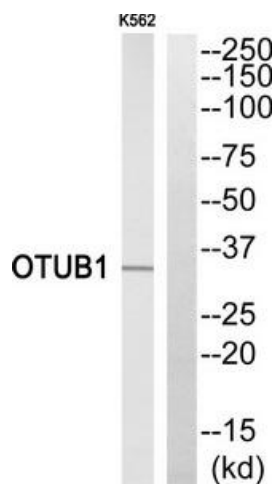
#### Product data:

Product Type:	Primary Antibodies
Applications:	WB
Recommended Dilution:	WB: 1:500~1:3000, ELISA: 1:10000
Reactivity:	Human, Mouse, Rat
Host:	Rabbit
Isotype:	IgG
Clonality:	Polyclonal
Immunogen:	The antiserum was produced against synthesized peptide derived from Internal of human OTUB1.
Formulation:	Phosphate buffered saline (without Mg <sup>2+</sup> and Ca <sup>2+</sup> ), pH 7.4, 150mM NaCl, 0.02% sodium azide and 50% glycerol.
Concentration:	lot specific
Purification:	The antibody was affinity-purified from rabbit antiserum by affinity-chromatography using epitope-specific immunogen.
Conjugation:	Unconjugated
Storage:	Store at -20°C as received.
Stability:	Stable for 12 months from date of receipt.
Gene Name:	OTU deubiquitinase, ubiquitin aldehyde binding 1
Database Link:	<a href="#">NP_060140</a> <a href="#">Entrez Gene 107260 MouseEntrez Gene 293705 RatEntrez Gene 55611 Human Q96FW1</a>
Synonyms:	HSPC263; OTB1; OTU1
Note:	OTUB1 Antibody detects endogenous levels of total OTUB1 protein.
Protein Families:	Protease



[View online »](#)

## Product images:



Western blot analysis of extracts from K562 cells, using OTUB1 Antibody. The lane on the right is treated with the synthesized peptide.