

Product datasheet for **TA312382**

NOTCH1 Rabbit Polyclonal Antibody

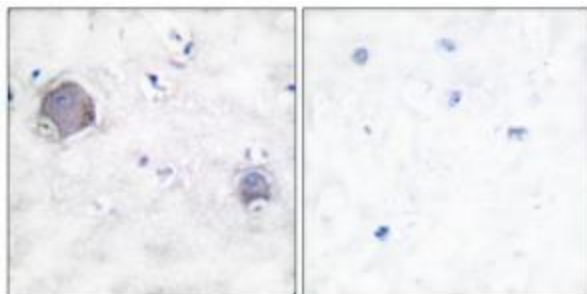
Product data:

Product Type:	Primary Antibodies
Applications:	IHC, WB
Recommended Dilution:	WB: 1:500~1:3000, IHC: 1:50~1:100, ELISA: 1:5000
Reactivity:	Human, Mouse, Rat
Host:	Rabbit
Isotype:	IgG
Clonality:	Polyclonal
Immunogen:	The antiserum was produced against synthesized peptide derived from human Notch 1.
Formulation:	Phosphate buffered saline (without Mg ²⁺ and Ca ²⁺), pH 7.4, 150mM NaCl, 0.02% sodium azide and 50% glycerol.
Purification:	The antibody was affinity-purified from rabbit antiserum by affinity-chromatography using epitope-specific immunogen.
Conjugation:	Unconjugated
Storage:	Store at -20°C as received.
Stability:	Stable for 12 months from date of receipt.
Gene Name:	notch 1
Database Link:	NP_060087 Entrez Gene 18128 Mouse Entrez Gene 25496 Rat Entrez Gene 4851 Human P46531
Synonyms:	AOS5; AOVD1; hN1; TAN1
Note:	Notch 1 (cleaved-Val1744) antibody detects endogenous levels of fragment of activated Notch 1 resulting from cleavage adjacent to Val1744.
Protein Families:	Adult stem cells, Cancer stem cells, Druggable Genome, ES Cell Differentiation/IPS, Stem cell relevant signaling - DSL/Notch pathway
Protein Pathways:	Dorso-ventral axis formation, Notch signaling pathway, Prion diseases

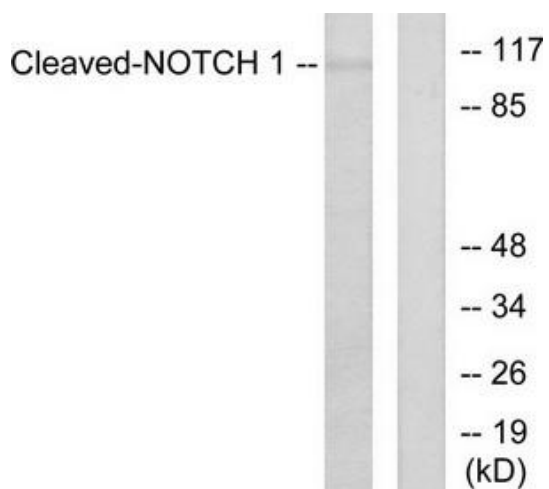


[View online »](#)

Product images:



Immunohistochemical analysis of paraffin-embedded human brain tissue using Notch 1 (cleaved-Val1744) antibody. The picture on the right is treated with the synthesized peptide.



Western blot analysis of extracts from NIH/3T3 cells, treated with etoposide (25µM, 1 hour), using Notch 1 (cleaved-Val1744) antibody. The lane on the right is treated with the synthesized peptide.