

## Product datasheet for **TA312380**

### Protein Kinase D2 (PRKD2) Rabbit Polyclonal Antibody

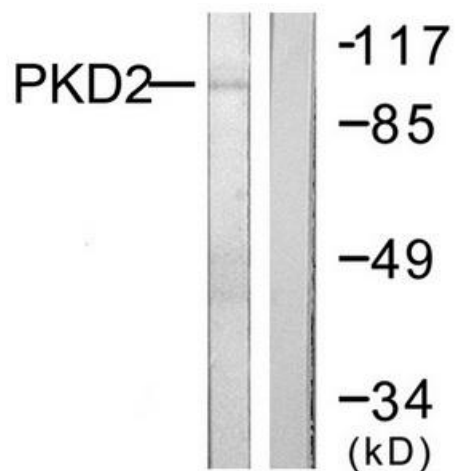
#### Product data:

Product Type:	Primary Antibodies
Applications:	IHC, WB
Recommended Dilution:	WB: 1:500~1:3000, IHC: 1:50~1:100, ELISA: 1:5000
Reactivity:	Human, Mouse
Host:	Rabbit
Isotype:	IgG
Clonality:	Polyclonal
Immunogen:	The antiserum was produced against synthesized non-phosphopeptide derived from human PKD2 around the phosphorylation site of serine 876 (R-I-SP-V-L).
Formulation:	Phosphate buffered saline (without Mg <sup>2+</sup> and Ca <sup>2+</sup> ), pH 7.4, 150mM NaCl, 0.02% sodium azide and 50% glycerol.
Concentration:	lot specific
Purification:	The antibody was affinity-purified from rabbit antiserum by affinity-chromatography using epitope-specific immunogen.
Conjugation:	Unconjugated
Storage:	Store at -20°C as received.
Stability:	Stable for 12 months from date of receipt.
Gene Name:	protein kinase D2
Database Link:	<a href="#">NP_057541</a> <a href="#">Entrez Gene 101540 Mouse</a> <a href="#">Entrez Gene 25865 Human</a> <a href="#">Q9BZL6</a>
Synonyms:	HSPC187; nPKC-D2; PKD2
Note:	PKD2 (Ab-876) antibody detects endogenous levels of total PKD2 protein.
Protein Families:	Druggable Genome, Protein Kinase

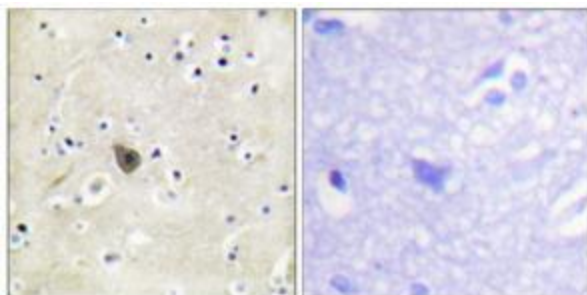


[View online »](#)

## Product images:



Western blot analysis of extracts from NIH/3T3 cells, treated with PMA (250ng/ml, 15mins), using PKD2 (Ab-876) antibody. The lane on the right is treated with the synthesized peptide.



Immunohistochemistry analysis of paraffin-embedded human brain tissue using PKD2 (Ab-876) antibody. The picture on the right is treated with the synthesized peptide.