

Product datasheet for **TA312379**

CMPK1 Rabbit Polyclonal Antibody

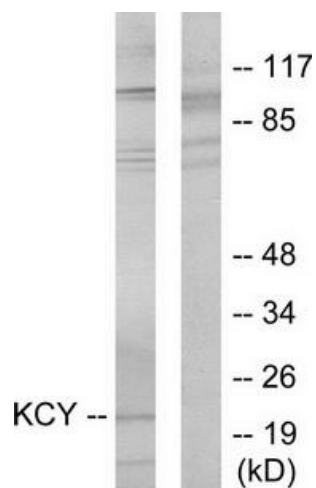
Product data:

Product Type:	Primary Antibodies
Applications:	WB
Recommended Dilution:	WB: 1:500~1:3000, ELISA: 1:10000
Reactivity:	Human, Mouse, Rat
Host:	Rabbit
Isotype:	IgG
Clonality:	Polyclonal
Immunogen:	The antiserum was produced against synthesized peptide derived from internal of human KCY.
Formulation:	Phosphate buffered saline (without Mg ²⁺ and Ca ²⁺), pH 7.4, 150mM NaCl, 0.02% sodium azide and 50% glycerol.
Concentration:	lot specific
Purification:	The antibody was affinity-purified from rabbit antiserum by affinity-chromatography using epitope-specific immunogen.
Conjugation:	Unconjugated
Storage:	Store at -20°C as received.
Stability:	Stable for 12 months from date of receipt.
Gene Name:	cytidine/uridine monophosphate kinase 1
Database Link:	NP_057392 Entrez Gene 66588 MouseEntrez Gene 298410 RatEntrez Gene 51727 Human P30085
Synonyms:	CK; CMK; CMPK; UMK; UMP-CMPK; UMPK
Note:	KCY antibody detects endogenous levels of total KCY protein.
Protein Families:	Druggable Genome
Protein Pathways:	Metabolic pathways, Pyrimidine metabolism



[View online »](#)

Product images:



Western blot analysis of extracts from HeLa cells, using KYC antibody. The lane on the right is treated with the synthesized peptide.