

Product datasheet for **TA312377**

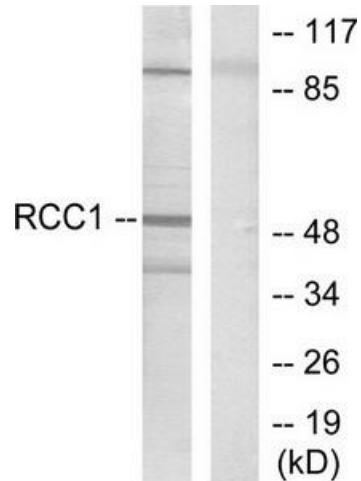
Retinoic Acid Receptor beta (RARβ) Rabbit Polyclonal Antibody

Product data:

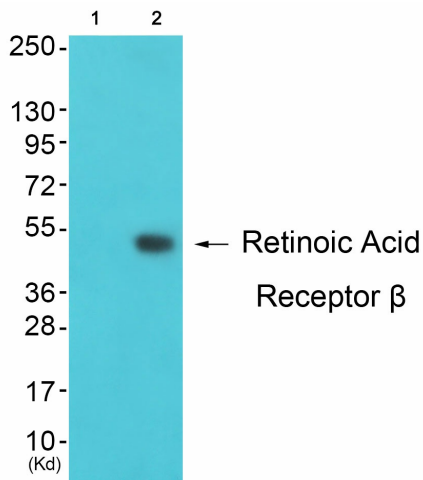
Product Type:	Primary Antibodies
Applications:	IHC, WB
Recommended Dilution:	WB: 1:500~1:3000, IHC: 1:50~1:100, ELISA: 1:20000
Reactivity:	Human, Mouse
Host:	Rabbit
Isotype:	IgG
Clonality:	Polyclonal
Immunogen:	The antiserum was produced against synthesized peptide derived from human Retinoic Acid Receptor β .
Formulation:	Phosphate buffered saline (without Mg ²⁺ and Ca ²⁺), pH 7.4, 150mM NaCl, 0.02% sodium azide and 50% glycerol.
Concentration:	lot specific
Purification:	The antibody was affinity-purified from rabbit antiserum by affinity-chromatography using epitope-specific immunogen.
Conjugation:	Unconjugated
Storage:	Store at -20°C as received.
Stability:	Stable for 12 months from date of receipt.
Gene Name:	retinoic acid receptor beta
Database Link:	NP_057236 Entrez Gene 218772 Mouse Entrez Gene 5915 Human P10826
Synonyms:	HAP; MCOPS12; NR1B2; RARbeta1; RRB2
Note:	Retinoic Acid Receptor . antibody detects endogenous levels of total Retinoic Acid Receptor . protein.
Protein Families:	Druggable Genome, Nuclear Hormone Receptor, Transcription Factors
Protein Pathways:	Non-small cell lung cancer, Pathways in cancer, Small cell lung cancer



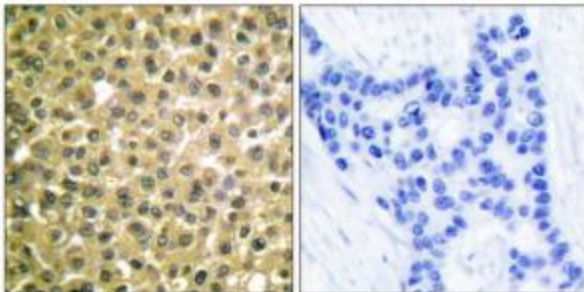
[View online »](#)

Product images:


Western blot analysis of extracts from HepG2 cells, using Retinoic Acid Receptor β antibody (#TA312377). The lane on the right is treated with the synthesized peptide.



Western blot analysis of extracts from K562 cells (Lane 2), using Retinoic Acid Receptor β Antibody. The lane on the left is treated with synthesized peptide.



Immunohistochemical analysis of paraffin-embedded human breast carcinoma tissue using Retinoic Acid Receptor β antibody (#TA312377). The picture on the right is treated with the synthesized peptide.