

Product datasheet for **TA312375**

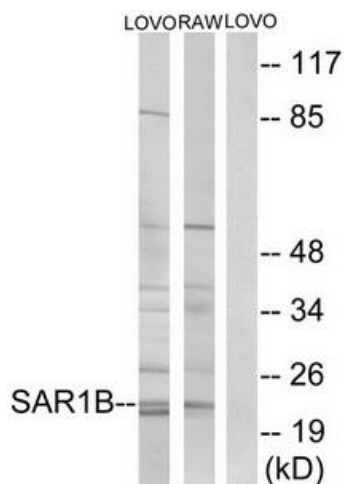
SAR1B Rabbit Polyclonal Antibody

Product data:

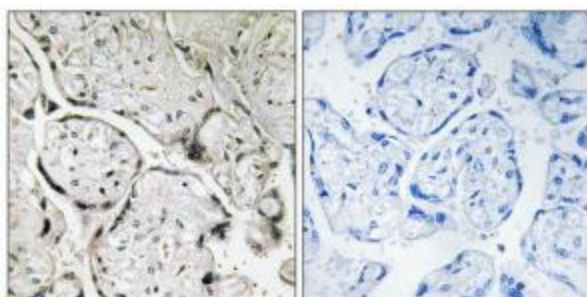
Product Type:	Primary Antibodies
Applications:	IHC, WB
Recommended Dilution:	WB: 1:500~1:3000, IHC: 1:50~1:100, ELISA: 1:20000
Reactivity:	Human, Mouse, Rat
Host:	Rabbit
Isotype:	IgG
Clonality:	Polyclonal
Immunogen:	The antiserum was produced against synthesized peptide derived from internal of human SAR1B.
Formulation:	Phosphate buffered saline (without Mg ²⁺ and Ca ²⁺), pH 7.4, 150mM NaCl, 0.02% sodium azide and 50% glycerol.
Concentration:	lot specific
Purification:	The antibody was affinity-purified from rabbit antiserum by affinity-chromatography using epitope-specific immunogen.
Conjugation:	Unconjugated
Storage:	Store at -20°C as received.
Stability:	Stable for 12 months from date of receipt.
Gene Name:	secretion associated Ras related GTPase 1B
Database Link:	NP_057187 Entrez Gene 66397 Mouse Entrez Gene 287276 Rat Entrez Gene 51128 Human Q9Y6B6
Synonyms:	ANDD; CMRD; GTBPB; SARA2
Note:	SAR1B antibody detects endogenous levels of total SAR1B protein.



[View online »](#)

Product images:


Western blot analysis of extracts from LOVO cells and RAW264.7 cells, using SAR1B antibody. The lane on the right is treated with the synthesized peptide.



Immunohistochemistry analysis of paraffin-embedded human placenta tissue using SAR1B antibody. The picture on the right is treated with the synthesized peptide.