

Product datasheet for **TA312369**

OR8G2 Rabbit Polyclonal Antibody

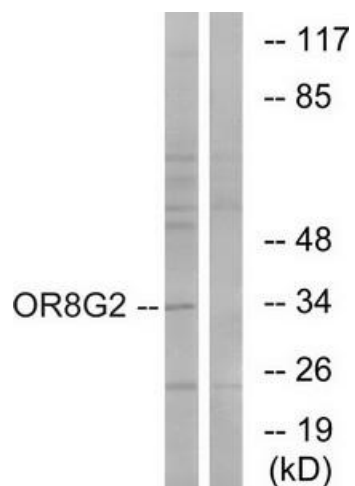
Product data:

Product Type:	Primary Antibodies
Applications:	WB
Recommended Dilution:	WB: 1:500~1:3000, IF: 1:100~1:500, ELISA: 1:10000
Reactivity:	Human
Host:	Rabbit
Isotype:	IgG
Clonality:	Polyclonal
Immunogen:	The antiserum was produced against synthesized peptide derived from internal of human OR8G2.
Formulation:	Phosphate buffered saline (without Mg ²⁺ and Ca ²⁺), pH 7.4, 150mM NaCl, 0.02% sodium azide and 50% glycerol.
Concentration:	lot specific
Purification:	The antibody was affinity-purified from rabbit antiserum by affinity-chromatography using epitope-specific immunogen.
Conjugation:	Unconjugated
Storage:	Store at -20°C as received.
Stability:	Stable for 12 months from date of receipt.
Database Link:	NP_001007250 Entrez Gene 26492 Human
Synonyms:	HSTPCR120; OR8G2P; OR8G4; ORL206; ORL486; TPCR120
Note:	OR8G2 antibody detects endogenous levels of total OR8G2 protein.
Protein Families:	Druggable Genome
Protein Pathways:	Olfactory transduction



[View online »](#)

Product images:



Western blot analysis of extracts from HT-29 cells, using OR8G2 antibody. The lane on the right is treated with the synthesized peptide.