

## Product datasheet for **TA312368S**

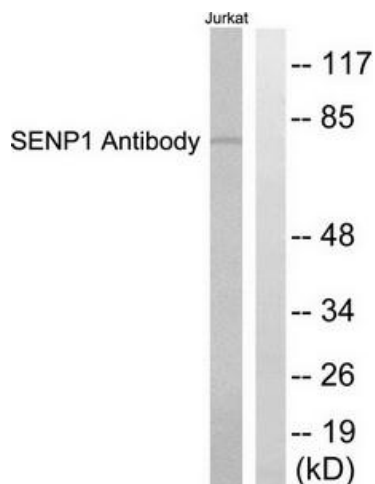
### SENP1 Rabbit Polyclonal Antibody

#### Product data:

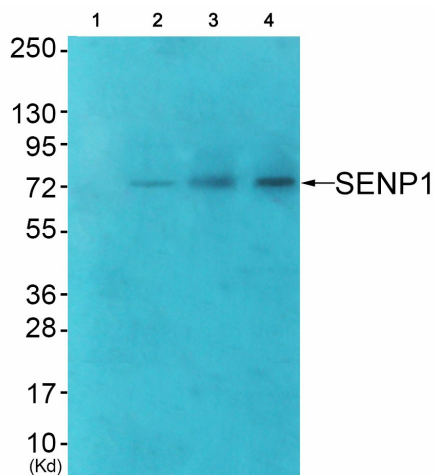
Product Type:	Primary Antibodies
Applications:	IHC, WB
Recommended Dilution:	WB: 1:500~1:3000, IHC: 1:50~1:100, ELISA: 1:10000
Reactivity:	Human, Mouse
Host:	Rabbit
Isotype:	IgG
Clonality:	Polyclonal
Immunogen:	The antiserum was produced against synthesized peptide derived from N-terminal of human SENP1.
Formulation:	Phosphate buffered saline (without Mg <sup>2+</sup> and Ca <sup>2+</sup> ), pH 7.4, 150mM NaCl, 0.02% sodium azide and 50% glycerol.
Concentration:	lot specific
Purification:	The antibody was affinity-purified from rabbit antiserum by affinity-chromatography using epitope-specific immunogen.
Conjugation:	Unconjugated
Storage:	Store at -20°C as received.
Stability:	Stable for 12 months from date of receipt.
Gene Name:	SUMO1/sentrin specific peptidase 1
Database Link:	<a href="#">NP_055369</a> <a href="#">Entrez Gene 223870 Mouse</a> <a href="#">Entrez Gene 29843 Human</a> <a href="#">Q9P0U3</a>
Synonyms:	SuPr-2
Note:	SENP1 antibody detects endogenous levels of total SENP1 protein.
Protein Families:	Druggable Genome, Protease



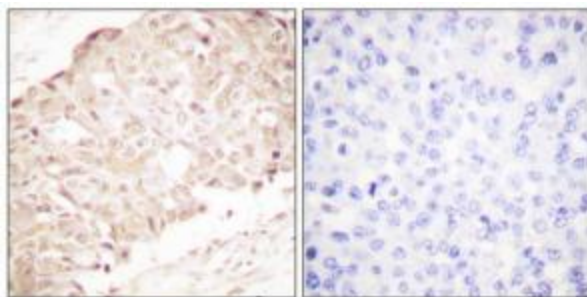
[View online »](#)

**Product images:**


Western blot analysis of extracts from Jurkat cells, using SENP1 antibody. The lane on the right is treated with the synthesized peptide.



Western blot analysis of extracts from JK cells (Lane 2), COS7 cells (Lane 3) and HuvEc cells (Lane 4), using SENP1 Antibody. The lane on the left is treated with synthesized peptide.



Immunohistochemistry analysis of paraffin-embedded human breast carcinoma tissue using SENP1 antibody. The picture on the right is treated with the synthesized peptide.