

Product datasheet for **TA312367**

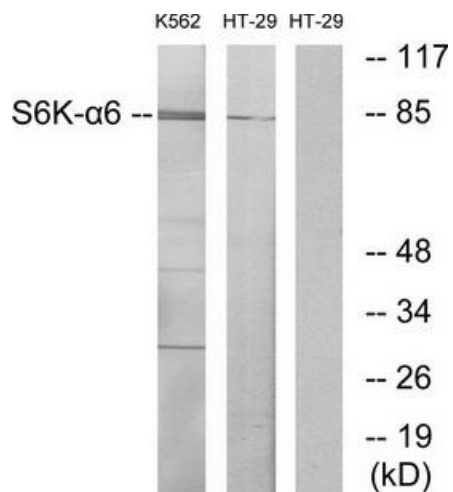
RSK4 (RPS6KA6) Rabbit Polyclonal Antibody

Product data:

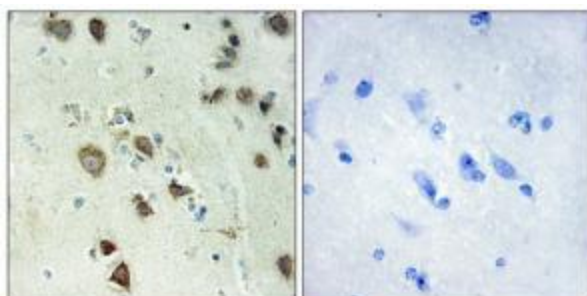
Product Type:	Primary Antibodies
Applications:	IHC, WB
Recommended Dilution:	WB: 1:500~1:3000, IHC: 1:50~1:100, ELISA: 1:10000
Reactivity:	Human
Host:	Rabbit
Isotype:	IgG
Clonality:	Polyclonal
Immunogen:	The antiserum was produced against synthesized peptide derived from internal of human S6K-a6.
Formulation:	Phosphate buffered saline (without Mg ²⁺ and Ca ²⁺), pH 7.4, 150mM NaCl, 0.02% sodium azide and 50% glycerol.
Concentration:	lot specific
Purification:	The antibody was affinity-purified from rabbit antiserum by affinity-chromatography using epitope-specific immunogen.
Conjugation:	Unconjugated
Storage:	Store at -20°C as received.
Stability:	Stable for 12 months from date of receipt.
Gene Name:	ribosomal protein S6 kinase A6
Database Link:	NP_055311 Entrez Gene 27330 Human Q9UK32
Synonyms:	PP90RSK4; RSK4
Note:	S6K-.6 antibody detects endogenous levels of total S6K-.6 protein.
Protein Families:	Druggable Genome, Protein Kinase
Protein Pathways:	Long-term potentiation, MAPK signaling pathway, mTOR signaling pathway, Neurotrophin signaling pathway, Oocyte meiosis, Progesterone-mediated oocyte maturation



[View online »](#)

Product images:

Western blot analysis of extracts from K562 cells and HT-29 cells, using S6K-α6 antibody. The lane on the right is treated with the synthesized peptide.



Immunohistochemistry analysis of paraffin-embedded human brain tissue using S6K-α6 antibody. The picture on the right is treated with the synthesized peptide.