

Product datasheet for **TA312352**

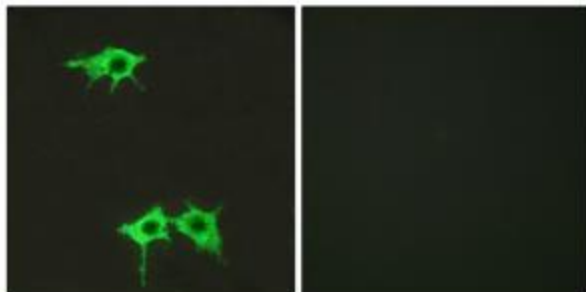
Frizzled 4 (FZD4) Rabbit Polyclonal Antibody

Product data:

Product Type:	Primary Antibodies
Applications:	IF
Recommended Dilution:	IF: 1:100~1:500, ELISA: 1:1000
Reactivity:	Human, Mouse, Rat
Host:	Rabbit
Isotype:	IgG
Clonality:	Polyclonal
Immunogen:	The antiserum was produced against synthesized peptide derived from internal of human FZD4.
Formulation:	Phosphate buffered saline (without Mg ²⁺ and Ca ²⁺), pH 7.4, 150mM NaCl, 0.02% sodium azide and 50% glycerol.
Concentration:	lot specific
Purification:	The antibody was affinity-purified from rabbit antiserum by affinity-chromatography using epitope-specific immunogen.
Conjugation:	Unconjugated
Storage:	Store at -20°C as received.
Stability:	Stable for 12 months from date of receipt.
Gene Name:	frizzled class receptor 4
Database Link:	NP_036325 Entrez Gene 14366 MouseEntrez Gene 64558 RatEntrez Gene 8322 Human Q9ULV1
Synonyms:	CD344; EVR1; FEVR; Fz-4; Fz4; FZD4S; FzE4; GPCR; hFz4
Note:	FZD4 antibody detects endogenous levels of total FZD4 protein.
Protein Families:	Druggable Genome, GPCR, Transmembrane
Protein Pathways:	Basal cell carcinoma, Colorectal cancer, Melanogenesis, Pathways in cancer, Wnt signaling pathway



[View online »](#)

Product images:

Immunofluorescence analysis of LOVO cells, using FZD4 antibody. The picture on the right is treated with the synthesized peptide.