

Product datasheet for **TA312349**

AHA1 (AHSA1) Rabbit Polyclonal Antibody

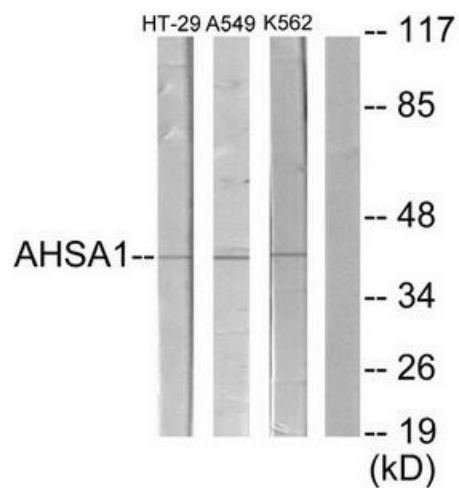
Product data:

Product Type:	Primary Antibodies
Applications:	WB
Recommended Dilution:	WB: 1:500~1:3000, ELISA: 1:20000
Reactivity:	Human
Host:	Rabbit
Isotype:	IgG
Clonality:	Polyclonal
Immunogen:	The antiserum was produced against synthesized peptide derived from internal of human AHSA1.
Formulation:	Phosphate buffered saline (without Mg ²⁺ and Ca ²⁺), pH 7.4, 150mM NaCl, 0.02% sodium azide and 50% glycerol.
Concentration:	lot specific
Purification:	The antibody was affinity-purified from rabbit antiserum by affinity-chromatography using epitope-specific immunogen.
Conjugation:	Unconjugated
Storage:	Store at -20°C as received.
Stability:	Stable for 12 months from date of receipt.
Gene Name:	activator of Hsp90 ATPase activity 1
Database Link:	NP_036243 Entrez Gene 10598 Human O95433
Synonyms:	AHA1; C14orf3; p38
Note:	AHSA1 antibody detects endogenous levels of total AHSA1 protein.



[View online »](#)

Product images:



Western blot analysis of extracts from HT-29 cells, A549 cells and K562 cells, using AHSA1 antibody. The lane on the right is treated with the synthesized peptide.