

## Product datasheet for **TA312347**

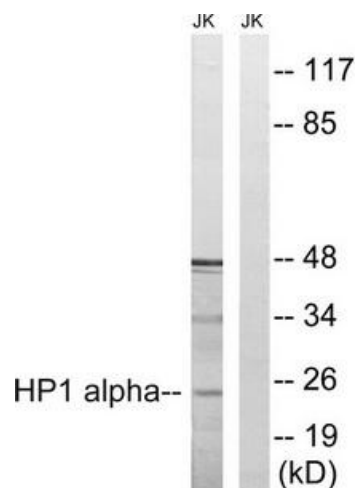
### HP1 alpha (CBX5) Rabbit Polyclonal Antibody

#### Product data:

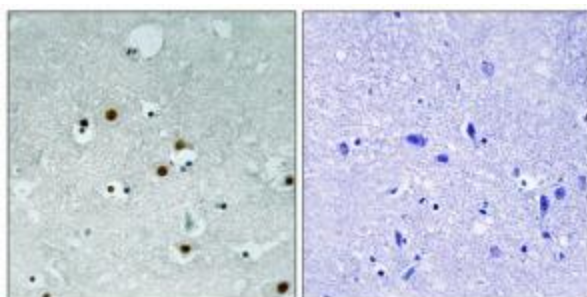
Product Type:	Primary Antibodies
Applications:	IHC, WB
Recommended Dilution:	WB: 1:500~1:3000, IHC: 1:50~1:100, ELISA: 1:1000
Reactivity:	Human
Host:	Rabbit
Isotype:	IgG
Clonality:	Polyclonal
Immunogen:	The antiserum was produced against synthesized non-phosphopeptide derived from human HP1 alpha around the phosphorylation site of serine 92 (R-K-SP-N-F).
Formulation:	Phosphate buffered saline (without Mg <sup>2+</sup> and Ca <sup>2+</sup> ), pH 7.4, 150mM NaCl, 0.02% sodium azide and 50% glycerol.
Concentration:	lot specific
Purification:	The antibody was affinity-purified from rabbit antiserum by affinity-chromatography using epitope-specific immunogen.
Conjugation:	Unconjugated
Storage:	Store at -20°C as received.
Stability:	Stable for 12 months from date of receipt.
Gene Name:	chromobox 5
Database Link:	<a href="#">NP_036249</a> <a href="#">Entrez Gene 23468 Human</a> <a href="#">P45973</a>
Synonyms:	HEL25; HP1; HP1A
Note:	HP1 alpha (Ab-92) antibody detects endogenous levels of total HP1 alpha protein



[View online »](#)

**Product images:**

Western blot analysis of extracts from Jurkat cells, treated with insulin (0.01U/ml, 15mins), using HP1 alpha (Ab-92) antibody. The lane on the right is treated with the synthesized peptide.



Immunohistochemistry analysis of paraffin-embedded human brain tissue using HP1 alpha (Ab-92) antibody. The picture on the right is treated with the synthesized peptide.