

Product datasheet for **TA312343**

HSP90AB1 Rabbit Polyclonal Antibody

Product data:

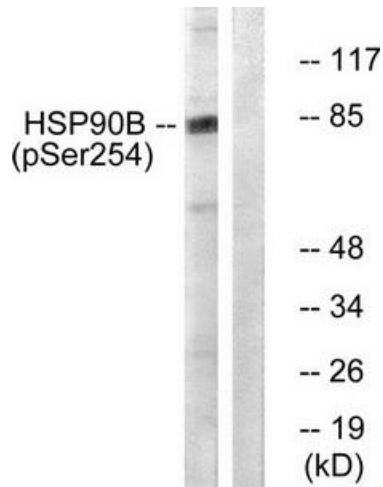
Product Type:	Primary Antibodies
Applications:	IF, IHC, WB
Recommended Dilution:	WB: 1:500~3000, IHC: 1:50~100, IF: 1:100~1:500, ELISA: 1:40000
Reactivity:	Human, Mouse, Rat
Modifications:	Phospho-specific
Host:	Rabbit
Isotype:	IgG
Clonality:	Polyclonal
Immunogen:	The antiserum was produced against synthesized phosphopeptide derived from human HSP90B around the phosphorylation site of serine 254 (V-G-SP-D-E).
Formulation:	Phosphate buffered saline (without Mg ²⁺ and Ca ²⁺), pH 7.4, 150mM NaCl, 0.02% sodium azide and 50% glycerol.
Concentration:	lot specific
Purification:	The antibody was affinity-purified from rabbit antiserum by affinity-chromatography using epitope-specific immunogen.
Conjugation:	Unconjugated
Storage:	Store at -20°C as received.
Stability:	Stable for 12 months from date of receipt.
Gene Name:	heat shock protein 90kDa alpha family class B member 1
Database Link:	NP_031381 Entrez Gene 15516 Mouse Entrez Gene 301252 Rat Entrez Gene 3326 Human P08238
Synonyms:	D6S182; HSP84; HSP90B; HSPC2; HSPCB
Note:	HSP90B (phospho-Ser254) antibody detects endogenous levels of HSP90B only when phosphorylated at serine 254.
Protein Families:	Druggable Genome, Stem cell - Pluripotency



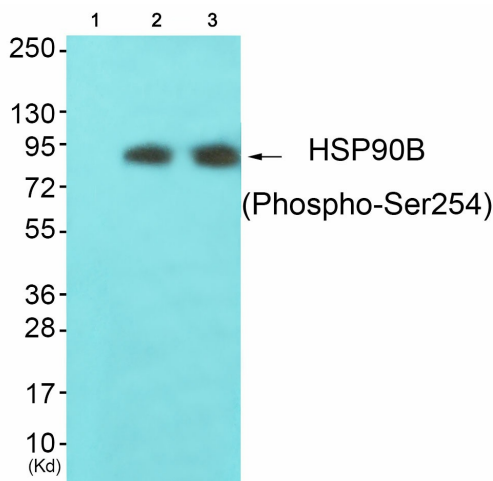
[View online »](#)

Protein Pathways:

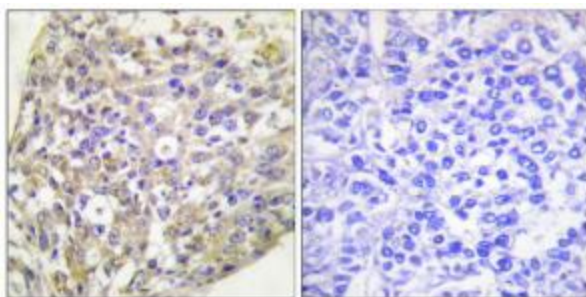
Antigen processing and presentation, NOD-like receptor signaling pathway, Pathways in cancer, Progesterone-mediated oocyte maturation, Prostate cancer

Product images:


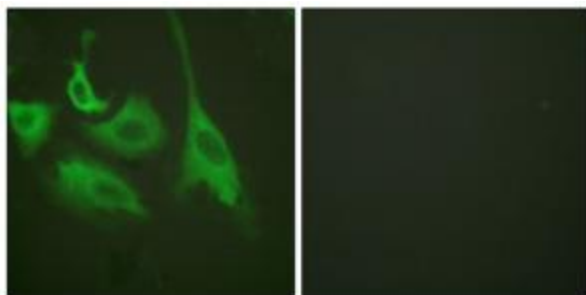
Western blot analysis of extracts from HeLa cells treated with TNF- α (10ng/ml, 30mins), using HSP90B (phospho-Ser254) antibody. The lane on the right is treated with the synthesized peptide.



Western blot analysis of extracts from JK cells (Lane 2) and K562 cells (Lane 3), using HSP90B (Phospho-Ser254) Antibody. The lane on the left is treated with synthesized peptide.



Immunohistochemical analysis of paraffin-embedded human breast carcinoma tissue using HSP90B (phospho-Ser254) antibody. The picture on the right is treated with the synthesized peptide.



Immunofluorescence analysis of HeLa cells, treated with TNF- α (20nM, 15mins), using HSP90B (phospho-Ser254) antibody (#11313). The picture on the right is treated with the synthesized peptide.