

Product datasheet for **TA312341**

DRP1 (DNM1L) Rabbit Polyclonal Antibody

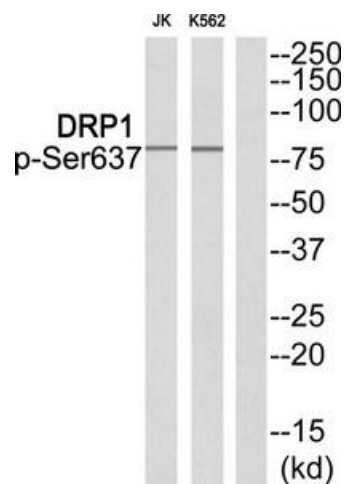
Product data:

Product Type:	Primary Antibodies
Applications:	WB
Recommended Dilution:	WB: 1:500~1:3000, ELISA: 1:10000
Reactivity:	Human, Mouse, Rat
Modifications:	Phospho-specific
Host:	Rabbit
Isotype:	IgG
Clonality:	Polyclonal
Immunogen:	The antiserum was produced against synthesized phosphopeptide derived from human DRP1 around the phosphorylation site of serine 637.
Formulation:	Phosphate buffered saline (without Mg ²⁺ and Ca ²⁺), pH 7.4, 150mM NaCl, 0.02% sodium azide and 50% glycerol.
Concentration:	lot specific
Purification:	The antibody was affinity-purified from rabbit antiserum by affinity-chromatography using epitope-specific immunogen.
Conjugation:	Unconjugated
Storage:	Store at -20°C as received.
Stability:	Stable for 12 months from date of receipt.
Gene Name:	dynamain 1-like
Database Link:	NP_036193 Entrez Gene 74006 Mouse Entrez Gene 114114 Rat Entrez Gene 10059 Human O00429
Synonyms:	DLP1; DRP1; DVLP; DYMPLE; EMPF; EMPF1; HDYNIV
Note:	DRP1 (Phospho-Ser637) antibody detects endogenous levels of DRP1 only when phosphorylated at serine 637.
Protein Pathways:	Endocytosis, Fc gamma R-mediated phagocytosis



[View online »](#)

Product images:



Western blot analysis of extracts from JK cells and K562 cells, using DRP1 (Phospho-Ser637) antibody. The lane on the right is treated with the synthesized peptide.