

Product datasheet for **TA312340**

DRP1 (DNM1L) Rabbit Polyclonal Antibody

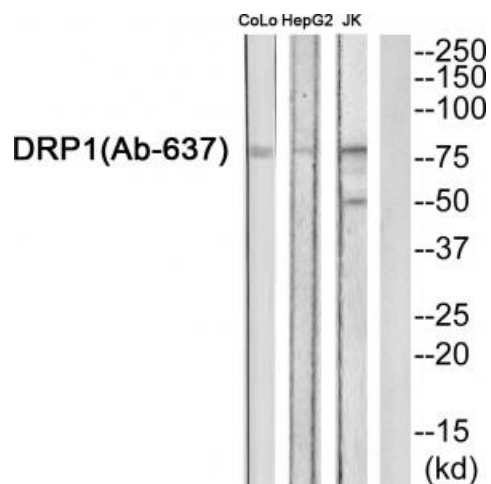
Product data:

Product Type:	Primary Antibodies
Applications:	WB
Recommended Dilution:	WB: 1:500~1:3000, ELISA: 1:10000
Reactivity:	Human, Mouse, Rat
Host:	Rabbit
Isotype:	IgG
Clonality:	Polyclonal
Immunogen:	The antiserum was produced against synthesized peptide derived from C-terminal of human DNM1L.
Formulation:	Phosphate buffered saline (without Mg ²⁺ and Ca ²⁺), pH 7.4, 150mM NaCl, 0.02% sodium azide and 50% glycerol.
Concentration:	lot specific
Purification:	The antibody was affinity-purified from rabbit antiserum by affinity-chromatography using epitope-specific immunogen.
Conjugation:	Unconjugated
Storage:	Store at -20°C as received.
Stability:	Stable for 12 months from date of receipt.
Gene Name:	dynamin 1-like
Database Link:	NP_036192 Entrez Gene 74006 MouseEntrez Gene 114114 RatEntrez Gene 10059 Human O00429
Synonyms:	DLP1; DRP1; DVLP; DYMPLE; EMPF; EMPF1; HDYNIV
Note:	DRP1 (Ab-637) antibody detects endogenous levels of total DNM1L protein.
Protein Pathways:	Endocytosis, Fc gamma R-mediated phagocytosis

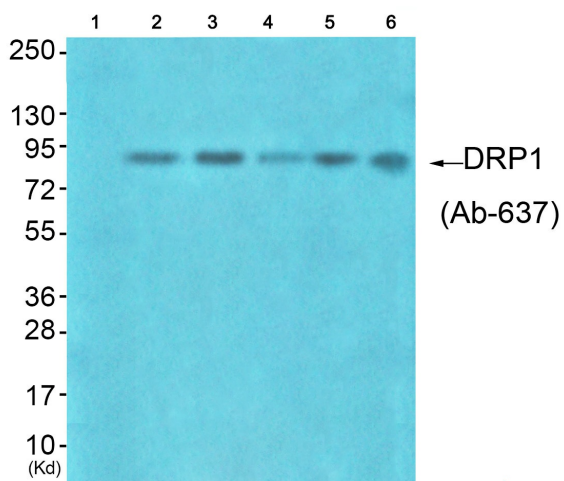


[View online »](#)

Product images:



Western blot analysis of extracts from CoLo, HepG2, JK cells, using DRP1 (Ab-637) antibody. The lane on the right is treated with the synthesized peptide.



Western blot analysis of extracts from HuvEc cells (Lane 2), HepG2 cells (Lane 3), colo cells (Lane 4), 293 cells (Lane 5) and JK cells (Lane 6), using DRP1 (Ab-637) Antibody. The lane on the left is treated with synthesized peptide.