

Product datasheet for **TA312338**

Annexin A10 (ANXA10) Rabbit Polyclonal Antibody

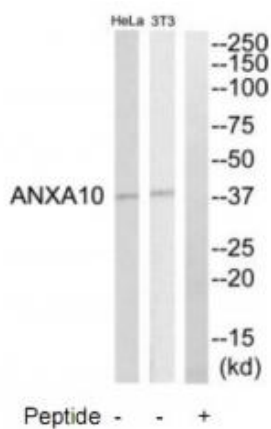
Product data:

Product Type:	Primary Antibodies
Applications:	WB
Recommended Dilution:	WB: 1:500~1:3000, ELISA: 1:20000
Reactivity:	Human, Mouse
Host:	Rabbit
Isotype:	IgG
Clonality:	Polyclonal
Immunogen:	The antiserum was produced against synthesized peptide derived from C-terminal of human ANXA10.
Formulation:	Phosphate buffered saline (without Mg ²⁺ and Ca ²⁺), pH 7.4, 150mM NaCl, 0.02% sodium azide and 50% glycerol.
Concentration:	lot specific
Purification:	The antibody was affinity-purified from rabbit antiserum by affinity-chromatography using epitope-specific immunogen.
Conjugation:	Unconjugated
Storage:	Store at -20°C as received.
Stability:	Stable for 12 months from date of receipt.
Gene Name:	annexin A10
Database Link:	NP_009124 Entrez Gene 26359 Mouse Entrez Gene 11199 Human Q9UJ72
Synonyms:	ANX14
Note:	ANXA10 antibody detects endogenous levels of total ANXA10 protein.



[View online »](#)

Product images:



Western blot analysis of extracts from HeLa cell and NIH-3T3 cells, using ANXA10 antibody. The lane on the right is treated with the synthesized peptide.