

Product datasheet for **TA312332**

Kat7 Rabbit Polyclonal Antibody

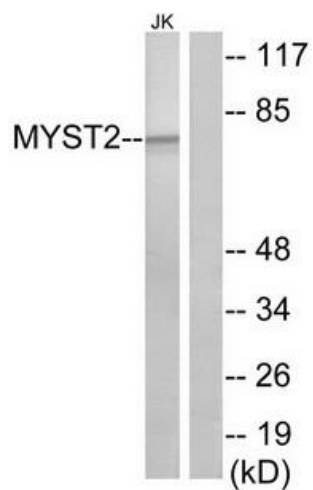
Product data:

Product Type:	Primary Antibodies
Applications:	IF, WB
Recommended Dilution:	WB: 1:500~1:3000, IF: 1:100~1:500, ELISA: 1:20000
Reactivity:	Human, Mouse, Rat
Host:	Rabbit
Isotype:	IgG
Clonality:	Polyclonal
Immunogen:	The antiserum was produced against synthesized peptide derived from internal of human MYST2.
Formulation:	Phosphate buffered saline (without Mg ²⁺ and Ca ²⁺), pH 7.4, 150mM NaCl, 0.02% sodium azide and 50% glycerol.
Concentration:	lot specific
Purification:	The antibody was affinity-purified from rabbit antiserum by affinity-chromatography using epitope-specific immunogen.
Conjugation:	Unconjugated
Storage:	Store at -20°C as received.
Stability:	Stable for 12 months from date of receipt.
Gene Name:	K(lysine) acetyltransferase 7
Database Link:	NP_808287 Entrez Gene 11143 Human Entrez Gene 303470 Rat Entrez Gene 217127 Mouse Q5SVQ0
Synonyms:	HBO1; HBOA; MYST2; ZC2HC7
Note:	MYST2 antibody detects endogenous levels of total MYST2 protein.

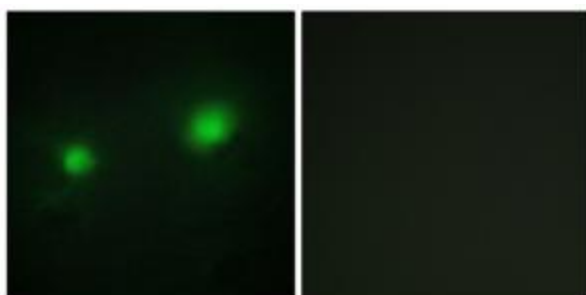


[View online »](#)

Product images:



Western blot analysis of extracts from Jurkat cells, using MYST2 antibody. The lane on the right is treated with the synthesized peptide.



Immunofluorescence analysis of HUVEC cells, using MYST2 antibody. The picture on the right is treated with the synthesized peptide.