

Product datasheet for **TA312331**

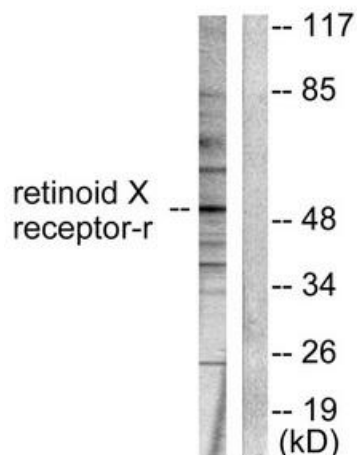
Retinoid X Receptor gamma (RXRG) Rabbit Polyclonal Antibody

Product data:

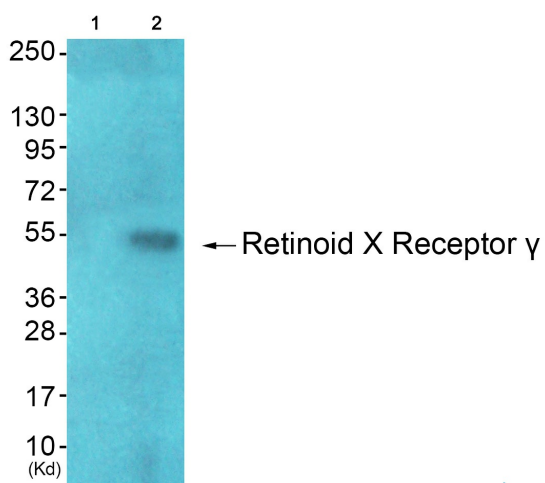
Product Type:	Primary Antibodies
Applications:	IF, IHC, WB
Recommended Dilution:	WB: 1:500~1:3000, IHC: 1:50~1:100, IF: 1:100~1:500, ELISA: 1:10000
Reactivity:	Human, Mouse, Rat
Host:	Rabbit
Isotype:	IgG
Clonality:	Polyclonal
Immunogen:	The antiserum was produced against synthesized peptide derived from human Retinoid X Receptor ? antibody.
Formulation:	Phosphate buffered saline (without Mg ²⁺ and Ca ²⁺), pH 7.4, 150mM NaCl, 0.02% sodium azide and 50% glycerol.
Concentration:	lot specific
Purification:	The antibody was affinity-purified from rabbit antiserum by affinity-chromatography using epitope-specific immunogen.
Conjugation:	Unconjugated
Storage:	Store at -20°C as received.
Stability:	Stable for 12 months from date of receipt.
Gene Name:	retinoid X receptor gamma
Database Link:	NP_008848 Entrez Gene 20183 MouseEntrez Gene 83574 RatEntrez Gene 6258 Human P48443
Synonyms:	NR2B3; RXRC
Note:	Retinoid X Receptor . antibody detects endogenous levels of total Retinoid X Receptor . protein.
Protein Families:	Druggable Genome, Nuclear Hormone Receptor, Transcription Factors
Protein Pathways:	Adipocytokine signaling pathway, Non-small cell lung cancer, Pathways in cancer, PPAR signaling pathway, Small cell lung cancer, Thyroid cancer



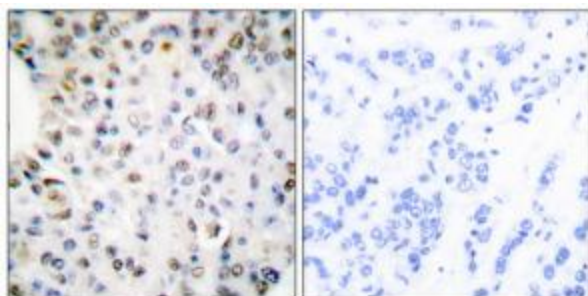
[View online »](#)

Product images:


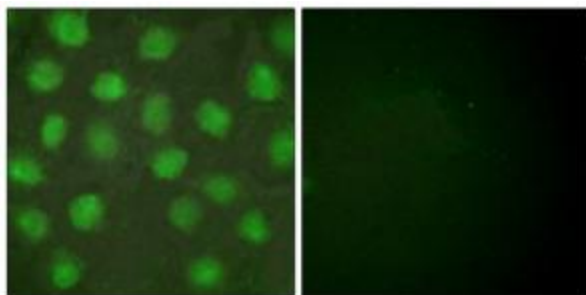
Western blot analysis of extracts from HepG2 cells, using Retinoid X Receptor γ antibody (#TA312331). The lane on the right is treated with the synthesized peptide.



Western blot analysis of extracts from HepG2 cells (Lane 2), using Retinoid X Receptor γ Antibody. The lane on the left is treated with synthesized peptide.



Immunohistochemical analysis of paraffin-embedded human breast carcinoma tissue using Retinoid X Receptor γ antibody (#TA312331). The picture on the right is treated with the synthesized peptide.



Immunofluorescence analysis of HuvEc cells, using Retinoid X Receptor γ antibody (#TA312331). The picture on the right is treated with the synthesized peptide.