

Product datasheet for **TA312328**

14-3-3 epsilon (YWHAE) Rabbit Polyclonal Antibody

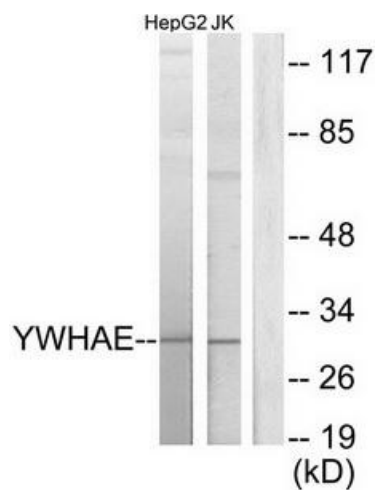
Product data:

Product Type:	Primary Antibodies
Applications:	WB
Recommended Dilution:	WB: 1:500~1:3000, ELISA: 1:20000
Reactivity:	Human, Mouse, Rat
Host:	Rabbit
Isotype:	IgG
Clonality:	Polyclonal
Immunogen:	The antiserum was produced against synthesized peptide derived from C-terminal of human 14-3-3 e.
Formulation:	Phosphate buffered saline (without Mg ²⁺ and Ca ²⁺), pH 7.4, 150mM NaCl, 0.02% sodium azide and 50% glycerol.
Concentration:	lot specific
Purification:	The antibody was affinity-purified from rabbit antiserum by affinity-chromatography using epitope-specific immunogen.
Conjugation:	Unconjugated
Storage:	Store at -20°C as received.
Stability:	Stable for 12 months from date of receipt.
Gene Name:	tyrosine 3-monooxygenase/tryptophan 5-monooxygenase activation protein epsilon
Database Link:	NP_006752 Entrez Gene 22627 Mouse Entrez Gene 29753 Rat Entrez Gene 7531 Human P62258
Synonyms:	14-3-3E; HEL2; KCIP-1; MDCR; MDS
Note:	14-3-3 . antibody detects endogenous levels of total 14-3-3 . protein.
Protein Families:	Druggable Genome
Protein Pathways:	Cell cycle, Neurotrophin signaling pathway, Oocyte meiosis



[View online »](#)

Product images:



Western blot analysis of extracts from HepG2 cells and Jurkat cells, using 14-3-3 e antibody. The lane on the right is treated with the synthesized peptide.