

Product datasheet for **TA312326**

MCM5 Rabbit Polyclonal Antibody

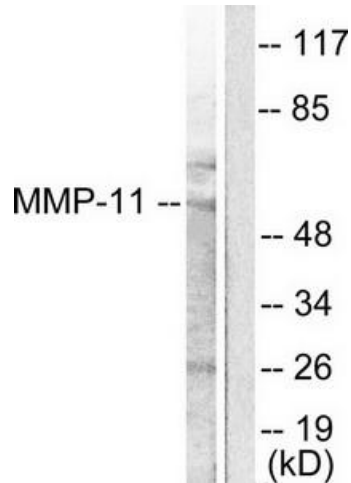
Product data:

Product Type:	Primary Antibodies
Applications:	IF, IHC, WB
Recommended Dilution:	WB: 1:500~1:3000, IHC: 1:50~1:100, IF: 1:100~1:500, ELISA: 1:20000
Reactivity:	Human, Mouse, Rat
Host:	Rabbit
Isotype:	IgG
Clonality:	Polyclonal
Immunogen:	The antiserum was produced against synthesized peptide derived from human MMP-11 antibody.
Formulation:	Phosphate buffered saline (without Mg ²⁺ and Ca ²⁺), pH 7.4, 150mM NaCl, 0.02% sodium azide and 50% glycerol.
Concentration:	lot specific
Purification:	The antibody was affinity-purified from rabbit antiserum by affinity-chromatography using epitope-specific immunogen.
Conjugation:	Unconjugated
Storage:	Store at -20°C as received.
Stability:	Stable for 12 months from date of receipt.
Gene Name:	minichromosome maintenance complex component 5
Database Link:	NP_006730 Entrez Gene 17218 Mouse Entrez Gene 291885 Rat Entrez Gene 4174 Human P33992
Synonyms:	CDC46; P1-CDC46
Note:	MMP-11 antibody detects endogenous levels of total MMP-11 protein.
Protein Families:	Stem cell - Pluripotency, Transcription Factors
Protein Pathways:	Cell cycle, DNA replication

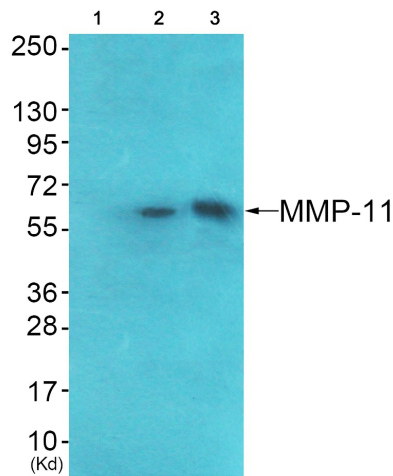


[View online »](#)

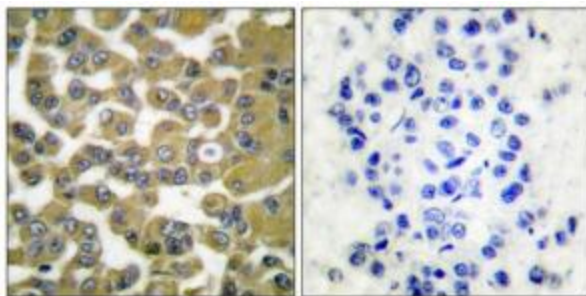
Product images:



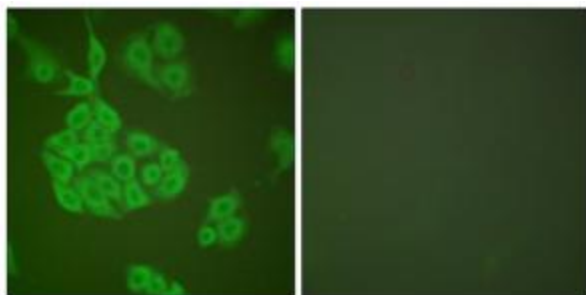
Western blot analysis of extracts from A549 cells, using MMP-11 antibody (#TA312326). The lane on the right is treated with the synthesized peptide.



Western blot analysis of extracts from HepG2 cells (Lane 2) and HeLa cells (Lane 3), using MMP-11 Antibody. The lane on the left is treated with synthesized peptide.



Immunohistochemical analysis of paraffin-embedded human breast carcinoma tissue using MMP-11 antibody (#TA312326). The picture on the right is treated with the synthesized peptide.



Immunofluorescence analysis of A549 cells, using MMP-11 antibody (#TA312326). The picture on the right is treated with the synthesized peptide.