

Product datasheet for **TA312325**

MCM5 Rabbit Polyclonal Antibody

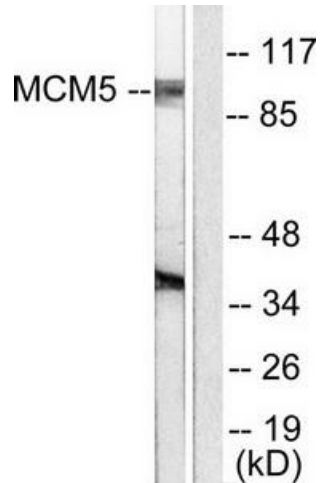
Product data:

Product Type:	Primary Antibodies
Applications:	IF, IHC, WB
Recommended Dilution:	WB: 1:500~1:3000, IHC: 1:50~1:100, IF: 1:100~1:500, ELISA: 1:20000
Reactivity:	Human, Mouse, Rat
Host:	Rabbit
Isotype:	IgG
Clonality:	Polyclonal
Immunogen:	The antiserum was produced against synthesized peptide derived from human MCM5 antibody.
Formulation:	Phosphate buffered saline (without Mg ²⁺ and Ca ²⁺), pH 7.4, 150mM NaCl, 0.02% sodium azide and 50% glycerol.
Concentration:	lot specific
Purification:	The antibody was affinity-purified from rabbit antiserum by affinity-chromatography using epitope-specific immunogen.
Conjugation:	Unconjugated
Storage:	Store at -20°C as received.
Stability:	Stable for 12 months from date of receipt.
Gene Name:	minichromosome maintenance complex component 5
Database Link:	NP_006730 Entrez Gene 17218 Mouse Entrez Gene 291885 Rat Entrez Gene 4174 Human P33992
Synonyms:	CDC46; P1-CDC46
Note:	MCM5 antibody detects endogenous levels of total MCM5 protein.
Protein Families:	Stem cell - Pluripotency, Transcription Factors
Protein Pathways:	Cell cycle, DNA replication

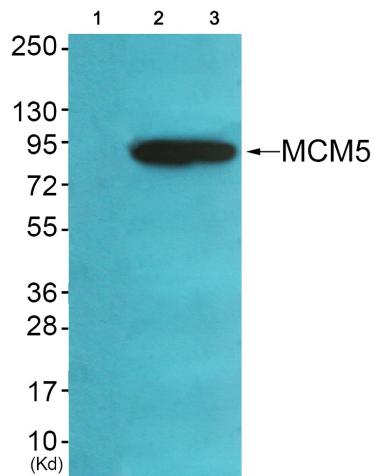


[View online »](#)

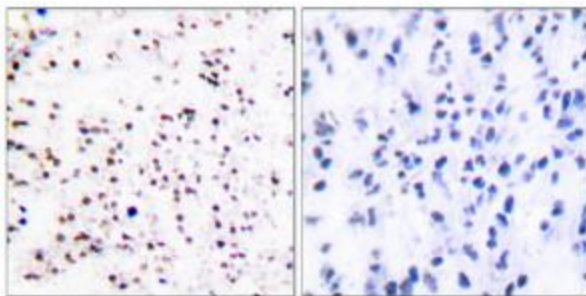
Product images:



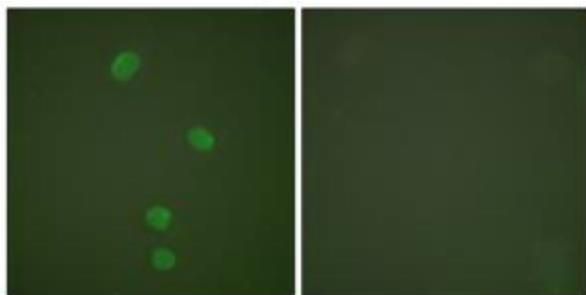
Western blot analysis of extracts from HepG2 cells, using MCM5 antibody (#TA312325). The lane on the right is treated with the synthesized peptide.



Western blot analysis of extracts from HeLa cells (Lane 2), A549 cells (Lane 3) and cells (Lane 4), using MCM5 Antibody. The lane on the left is treated with synthesized peptide.



Immunohistochemical analysis of paraffin-embedded human tonsil tissue using MCM5 antibody (#TA312325). The picture on the right is treated with the synthesized peptide.



Immunofluorescence analysis of HepG2 cells, using MCM5 antibody (#TA312325). The picture on the right is treated with the synthesized peptide.