

## Product datasheet for **TA312324**

### Hsp105 (HSPH1) Rabbit Polyclonal Antibody

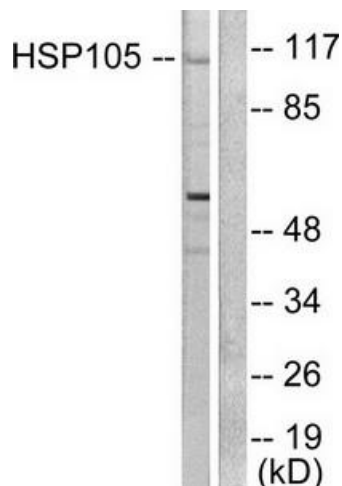
#### Product data:

Product Type:	Primary Antibodies
Applications:	IF, IHC, WB
Recommended Dilution:	WB: 1:500~1:3000, IHC: 1:50~1:100, IF: 1:100~1:500, ELISA: 1:10000
Reactivity:	Human, Mouse
Host:	Rabbit
Isotype:	IgG
Clonality:	Polyclonal
Immunogen:	The antiserum was produced against synthesized peptide derived from human HSP105.
Formulation:	Phosphate buffered saline (without Mg <sup>2+</sup> and Ca <sup>2+</sup> ), pH 7.4, 150mM NaCl, 0.02% sodium azide and 50% glycerol.
Concentration:	lot specific
Purification:	The antibody was affinity-purified from rabbit antiserum by affinity-chromatography using epitope-specific immunogen.
Conjugation:	Unconjugated
Storage:	Store at -20°C as received.
Stability:	Stable for 12 months from date of receipt.
Gene Name:	heat shock protein family H (Hsp110) member 1
Database Link:	<a href="#">NP_006635</a> <a href="#">Entrez Gene 15505 Mouse</a> <a href="#">Entrez Gene 10808 Human</a> <a href="#">Q92598</a>
Synonyms:	HSP105; HSP105A; HSP105B; NY-CO-25
Note:	HSP105 antibody detects endogenous levels of total HSP105 protein.
Protein Families:	Stem cell - Pluripotency

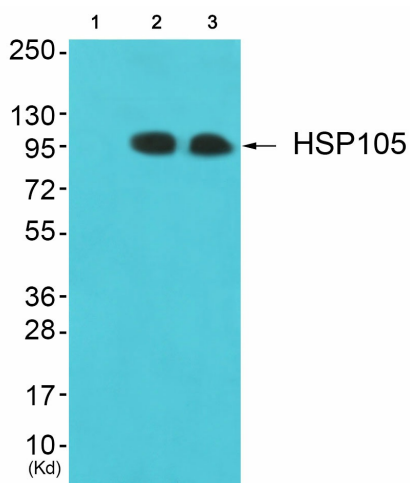


[View online »](#)

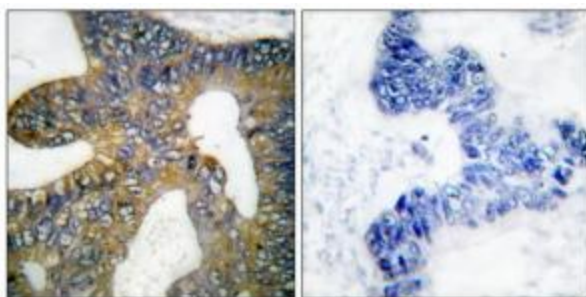
**Product images:**



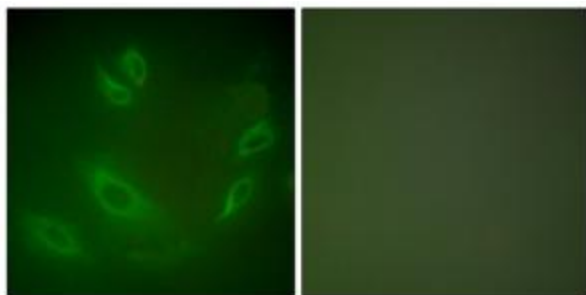
Western blot analysis of extracts from HeLa cells, using HSP105 antibody (#TA312324). The lane on the right is treated with the synthesized peptide.



Western blot analysis of extracts from JK cells (Lane 2) and HeLa cells (Lane 3), using HSP105 Antibody. The lane on the left is treated with synthesized peptide.



Immunohistochemical analysis of paraffin-embedded human colon carcinoma tissue using HSP105 antibody (#TA312324). The picture on the right is treated with the synthesized peptide.



Immunofluorescence analysis of HeLa cells, using HSP105 antibody (#TA312324). The picture on the right is treated with the synthesized peptide.