

## Product datasheet for **TA312320**

### NUDC Rabbit Polyclonal Antibody

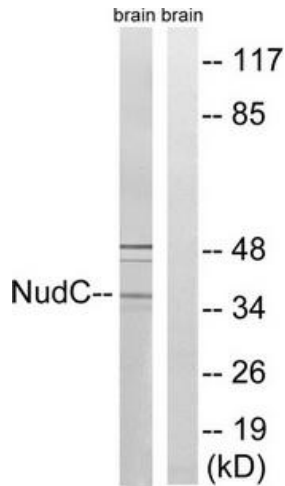
#### Product data:

Product Type:	Primary Antibodies
Applications:	WB
Recommended Dilution:	WB: 1:500~1:3000, ELISA: 1:10000
Reactivity:	Human, Mouse, Rat
Host:	Rabbit
Isotype:	IgG
Clonality:	Polyclonal
Immunogen:	The antiserum was produced against synthesized non-phosphopeptide derived from human NudC around the phosphorylation site of serine 326 (D-F-SP-K-A).
Formulation:	Phosphate buffered saline (without Mg <sup>2+</sup> and Ca <sup>2+</sup> ), pH 7.4, 150mM NaCl, 0.02% sodium azide and 50% glycerol.
Concentration:	lot specific
Purification:	The antibody was affinity-purified from rabbit antiserum by affinity-chromatography using epitope-specific immunogen.
Conjugation:	Unconjugated
Storage:	Store at -20°C as received.
Stability:	Stable for 12 months from date of receipt.
Gene Name:	nudC nuclear distribution protein
Database Link:	<a href="#">NP_006591</a> <a href="#">Entrez Gene 18221 Mouse</a> <a href="#">Entrez Gene 29648 Rat</a> <a href="#">Entrez Gene 10726 Human</a> <a href="#">Q9Y266</a>
Synonyms:	HNUDC; MNUDC; NPD011
Note:	NudC (Ab-326) antibody detects endogenous levels of total NudC protein.

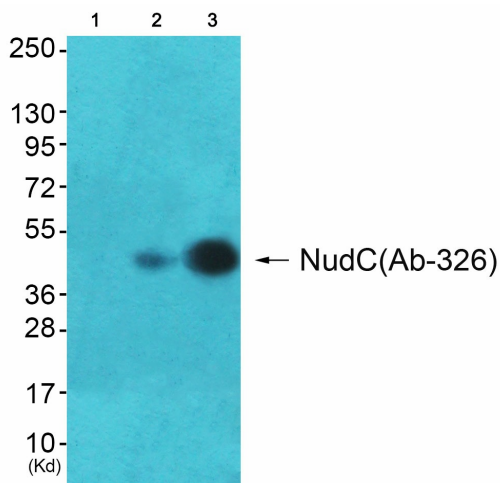


[View online »](#)

Product images:



Western blot analysis of extracts from rat brain cells, using NudC (Ab-326) antibody. The lane on the right is treated with the synthesized peptide.



Western blot analysis of extracts from HepG2 cells (Lane 2), using NudC (Ab-326) Antibody. The lane on the left is treated with synthesized peptide.