

Product datasheet for **TA312319**

CUG BP1 (CELF1) Rabbit Polyclonal Antibody

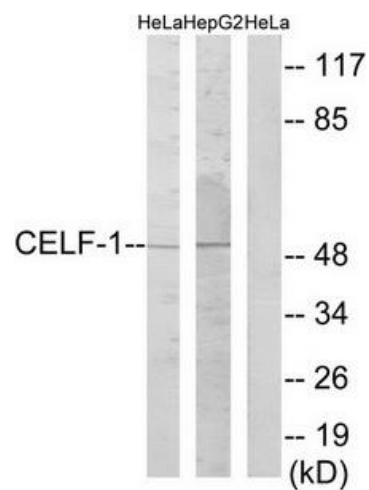
Product data:

Product Type:	Primary Antibodies
Applications:	WB
Recommended Dilution:	WB: 1:500~1:3000, ELISA: 1:40000
Reactivity:	Human, Mouse, Rat
Host:	Rabbit
Isotype:	IgG
Clonality:	Polyclonal
Immunogen:	The antiserum was produced against synthesized peptide derived from internal of human CELF-1.
Formulation:	Phosphate buffered saline (without Mg ²⁺ and Ca ²⁺), pH 7.4, 150mM NaCl, 0.02% sodium azide and 50% glycerol.
Concentration:	lot specific
Purification:	The antibody was affinity-purified from rabbit antiserum by affinity-chromatography using epitope-specific immunogen.
Conjugation:	Unconjugated
Storage:	Store at -20°C as received.
Stability:	Stable for 12 months from date of receipt.
Gene Name:	CUGBP, Elav-like family member 1
Database Link:	NP_006551 Entrez Gene 13046 MouseEntrez Gene 362160 RatEntrez Gene 10658 Human Q92879
Synonyms:	BRUNOL2; CUG-BP; CUGBP; CUGBP1; EDEN-BP; hNab50; NAB50; NAPOR
Note:	CELF-1 antibody detects endogenous levels of total CELF-1 protein.
Protein Families:	Druggable Genome



[View online »](#)

Product images:



Western blot analysis of extracts from HeLa cells and HepG2 cells, using CELF-1 antibody. The lane on the right is treated with the synthesized peptide.