

Product datasheet for **TA312312**

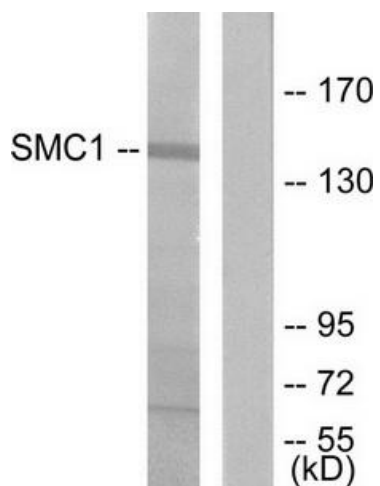
SMC1 (SMC1A) Rabbit Polyclonal Antibody

Product data:

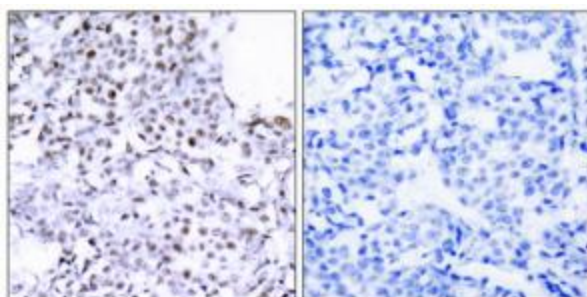
Product Type:	Primary Antibodies
Applications:	IHC, WB
Recommended Dilution:	WB: 1:500~1:3000, IHC: 1:50~1:100, ELISA: 1:10000
Reactivity:	Human, Mouse
Host:	Rabbit
Isotype:	IgG
Clonality:	Polyclonal
Immunogen:	The antiserum was produced against synthesized non-phosphopeptide derived from human SMC1 around the phosphorylation site of serine 957 (G-S-SP-Q-G)
Formulation:	Phosphate buffered saline (without Mg ²⁺ and Ca ²⁺), pH 7.4, 150mM NaCl, 0.02% sodium azide and 50% glycerol.
Concentration:	lot specific
Purification:	The antibody was affinity-purified from rabbit antiserum by affinity-chromatography using epitope-specific immunogen.
Conjugation:	Unconjugated
Storage:	Store at -20°C as received.
Stability:	Stable for 12 months from date of receipt.
Gene Name:	structural maintenance of chromosomes 1A
Database Link:	NP_006297 Entrez Gene 24061 Mouse Entrez Gene 8243 Human Q14683
Synonyms:	CDLS2; DXS423E; SB1.8; SMC1; SMC1alpha; SMC1L1; SMCB
Note:	SMC1 (Ab-957) antibody detects endogenous levels of total SMC1 protein.
Protein Families:	Druggable Genome
Protein Pathways:	Cell cycle, Oocyte meiosis



[View online »](#)

Product images:

Western blot analysis of extracts from 293 cells, treated with UV 15', using SMC1 (Ab-957) Antibody. The lane on the right is treated with the synthesized peptide.



Immunohistochemistry analysis of paraffin-embedded human breast carcinoma tissue, using SMC1 (Ab-957) Antibody. The picture on the right is treated with the synthesized peptide.