

## Product datasheet for **TA312311**

### **S100A1 Rabbit Polyclonal Antibody**

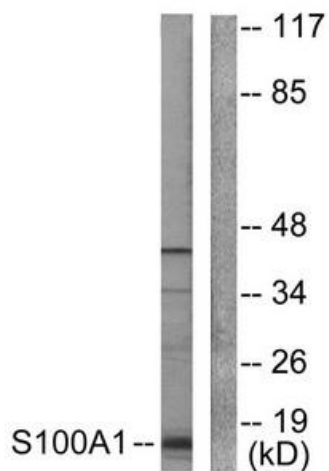
#### **Product data:**

<b>Product Type:</b>	Primary Antibodies
<b>Applications:</b>	IF, IHC, WB
<b>Recommended Dilution:</b>	WB: 1:500~1:3000, IHC: 1:50~1:100, IF: 1:100~1:500, ELISA: 1:20000
<b>Reactivity:</b>	Human, Mouse, Rat
<b>Host:</b>	Rabbit
<b>Isotype:</b>	IgG
<b>Clonality:</b>	Polyclonal
<b>Immunogen:</b>	The antiserum was produced against synthesized peptide derived from human S100 A1.
<b>Formulation:</b>	Phosphate buffered saline (without Mg <sup>2+</sup> and Ca <sup>2+</sup> ), pH 7.4, 150mM NaCl, 0.02% sodium azide and 50% glycerol.
<b>Concentration:</b>	lot specific
<b>Purification:</b>	The antibody was affinity-purified from rabbit antiserum by affinity-chromatography using epitope-specific immunogen.
<b>Conjugation:</b>	Unconjugated
<b>Storage:</b>	Store at -20°C as received.
<b>Stability:</b>	Stable for 12 months from date of receipt.
<b>Gene Name:</b>	S100 calcium binding protein A1
<b>Database Link:</b>	<a href="#">NP_006262</a> <a href="#">Entrez Gene 20193 Mouse</a> <a href="#">Entrez Gene 295214 Rat</a> <a href="#">Entrez Gene 6271 Human</a> <a href="#">P23297</a>
<b>Synonyms:</b>	S100; S100-alpha; S100A
<b>Note:</b>	S100 A1 antibody detects endogenous levels of total S100 A1 protein.

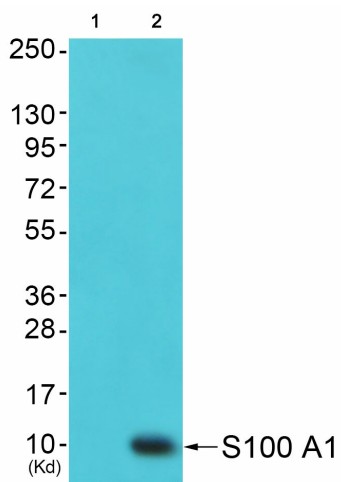


[View online »](#)

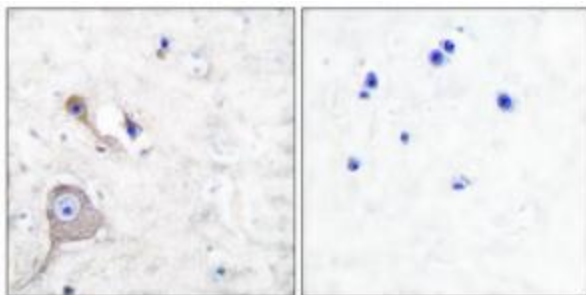
Product images:



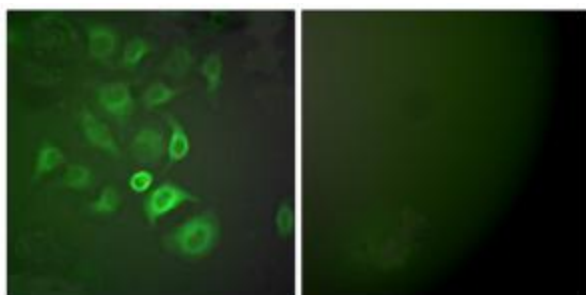
Western blot analysis of extracts from A549 cells, using S100 A1 antibody (#TA312311). The lane on the right is treated with the synthesized peptide.



Western blot analysis of extracts from 293 cells (Lane 2), using S100 A1 Antibody. The lane on the left is treated with synthesized peptide.



Immunohistochemical analysis of paraffin-embedded human brain tissue using S100 A1 antibody (#TA312311).The picture on the right is treated with the synthesized peptide.



Immunofluorescence analysis of A549 cells, using S100 A1 antibody (#TA312311).The picture on the right is treated with the synthesized peptide.