

Product datasheet for **TA312307**

DPF2 Rabbit Polyclonal Antibody

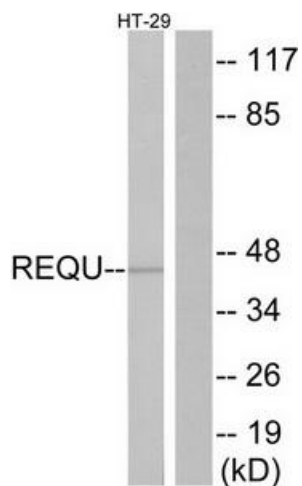
Product data:

Product Type:	Primary Antibodies
Applications:	IF, WB
Recommended Dilution:	WB: 1:500~1:3000, IF: 1:100~1:500, ELISA: 1:10000
Reactivity:	Human, Mouse
Host:	Rabbit
Isotype:	IgG
Clonality:	Polyclonal
Immunogen:	The antiserum was produced against synthesized peptide derived from internal of human REQU.
Formulation:	Phosphate buffered saline (without Mg ²⁺ and Ca ²⁺), pH 7.4, 150mM NaCl, 0.02% sodium azide and 50% glycerol.
Concentration:	lot specific
Purification:	The antibody was affinity-purified from rabbit antiserum by affinity-chromatography using epitope-specific immunogen.
Conjugation:	Unconjugated
Storage:	Store at -20°C as received.
Stability:	Stable for 12 months from date of receipt.
Gene Name:	double PHD fingers 2
Database Link:	NP_006259 Entrez Gene 19708 Mouse Entrez Gene 5977 Human Q92785
Synonyms:	REQ; ubi-d4; UBID4
Note:	REQU antibody detects endogenous levels of total REQU protein.
Protein Families:	Druggable Genome, Transcription Factors

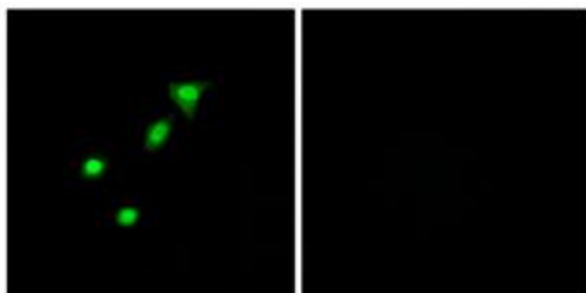


[View online »](#)

Product images:



Western blot analysis of extracts from HT-29 cells, using REQU antibody. The lane on the right is treated with the synthesized peptide.



Immunofluorescence analysis of A549 cells, using REQU antibody. The picture on the right is treated with the synthesized peptide.