

Product datasheet for **TA312305**

Peripherin (PRPH) Rabbit Polyclonal Antibody

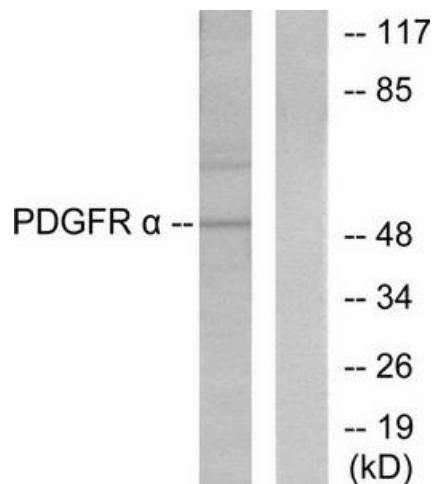
Product data:

Product Type:	Primary Antibodies
Applications:	IHC, WB
Recommended Dilution:	WB: 1:500~1:3000, IHC: 1:50~1:100, ELISA: 1:5000
Reactivity:	Human, Rat
Host:	Rabbit
Isotype:	IgG
Clonality:	Polyclonal
Immunogen:	The antiserum was produced against synthesized peptide derived from human Peripherin.
Formulation:	Phosphate buffered saline (without Mg ²⁺ and Ca ²⁺), pH 7.4, 150mM NaCl, 0.02% sodium azide and 50% glycerol.
Concentration:	lot specific
Purification:	The antibody was affinity-purified from rabbit antiserum by affinity-chromatography using epitope-specific immunogen.
Conjugation:	Unconjugated
Storage:	Store at -20°C as received.
Stability:	Stable for 12 months from date of receipt.
Gene Name:	peripherin
Database Link:	NP_006253 Entrez Gene 24688 Rat Entrez Gene 5630 Human P41219
Synonyms:	NEF4; PRPH1
Note:	Peripherin antibody detects endogenous levels of total Peripherin protein.
Protein Pathways:	Amyotrophic lateral sclerosis (ALS)

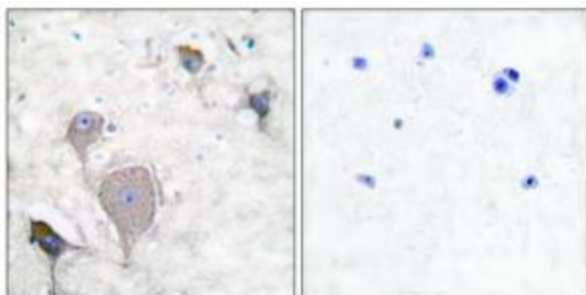


[View online »](#)

Product images:



Western blot analysis of extracts from HepG2 cells, using Peripherin antibody (#TA312305). The lane on the right is treated with the synthesized peptide.



Immunohistochemical analysis of paraffin-embedded human brain tissue using Peripherin antibody (#TA312305). The picture on the right is treated with the synthesized peptide.