

Product datasheet for **TA312303**

nkx6.1 (NKX6-1) Rabbit Polyclonal Antibody

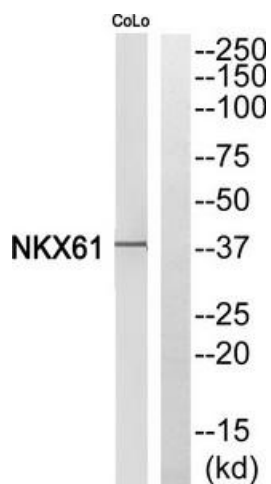
Product data:

Product Type:	Primary Antibodies
Applications:	WB
Recommended Dilution:	WB: 1:500~1:3000, ELISA: 1:10000
Reactivity:	Human, Mouse, Rat
Host:	Rabbit
Isotype:	IgG
Clonality:	Polyclonal
Immunogen:	The antiserum was produced against synthesized peptide derived from Internal of human NKX6-1.
Formulation:	Phosphate buffered saline (without Mg ²⁺ and Ca ²⁺), pH 7.4, 150mM NaCl, 0.02% sodium azide and 50% glycerol.
Concentration:	lot specific
Purification:	The antibody was affinity-purified from rabbit antiserum by affinity-chromatography using epitope-specific immunogen.
Conjugation:	Unconjugated
Storage:	Store at -20°C as received.
Stability:	Stable for 12 months from date of receipt.
Gene Name:	NK6 homeobox 1
Database Link:	NP_006159 Entrez Gene 18096 Mouse Entrez Gene 65193 Rat Entrez Gene 4825 Human P78426
Synonyms:	NKX6.1; NKX6A
Note:	NKX61 Antibody detects endogenous levels of total NKX6-1 protein.
Protein Families:	Transcription Factors
Protein Pathways:	Maturity onset diabetes of the young



[View online »](#)

Product images:



Western blot analysis of extracts from CoLo cells, using NKX61 Antibody. The lane on the right is treated with the synthesized peptide.