

Product datasheet for **TA312302**

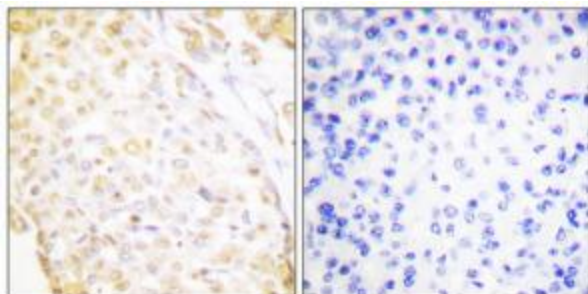
Nkx3.1 (NKX3-1) Rabbit Polyclonal Antibody

Product data:

Product Type:	Primary Antibodies
Applications:	IHC
Recommended Dilution:	IHC: 1:50~1:100, ELISA: 1:20000
Reactivity:	Human
Host:	Rabbit
Isotype:	IgG
Clonality:	Polyclonal
Immunogen:	he antiserum was produced against synthesized peptide derived from N-terminal of human NKX3.1.
Formulation:	Phosphate buffered saline (without Mg ²⁺ and Ca ²⁺), pH 7.4, 150mM NaCl, 0.02% sodium azide and 50% glycerol.
Concentration:	lot specific
Purification:	The antibody was affinity-purified from rabbit antiserum by affinity-chromatography using epitope-specific immunogen.
Conjugation:	Unconjugated
Storage:	Store at -20°C as received.
Stability:	Stable for 12 months from date of receipt.
Gene Name:	NK3 homeobox 1
Database Link:	NP_006158 Entrez Gene 4824 Human Q99801
Synonyms:	BAPX2; NKX3; NKX3.1; NKX3A
Note:	NKX3.1 antibody detects endogenous levels of total NKX3.1 protein.
Protein Families:	Druggable Genome, Transcription Factors
Protein Pathways:	Pathways in cancer, Prostate cancer



[View online »](#)

Product images:

Immunohistochemistry analysis of paraffin-embedded human breast carcinoma tissue, using NKX3.1 antibody. The picture on the right is treated with the synthesized peptide.