

Product datasheet for **TA312301**

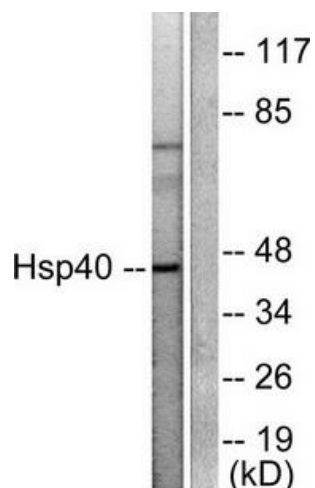
Hsp40 (DNAJB1) Rabbit Polyclonal Antibody

Product data:

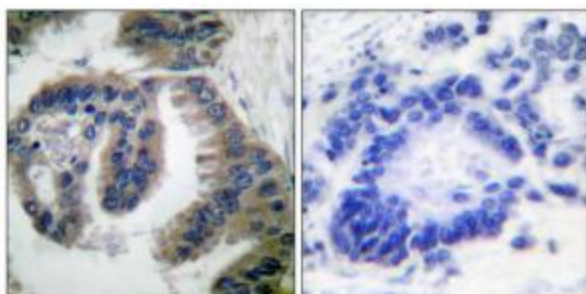
Product Type:	Primary Antibodies
Applications:	IF, IHC, WB
Recommended Dilution:	WB: 1:300~1:1000, IHC: 1:50~1:100, IF: 1:100~1:500, ELISA: 1:10000
Reactivity:	Human, Mouse, Rat
Host:	Rabbit
Isotype:	IgG
Clonality:	Polyclonal
Immunogen:	The antiserum was produced against synthesized peptide derived from human HSP40.
Formulation:	Phosphate buffered saline (without Mg ²⁺ and Ca ²⁺), pH 7.4, 150mM NaCl, 0.02% sodium azide and 50% glycerol.
Concentration:	lot specific
Purification:	The antibody was affinity-purified from rabbit antiserum by affinity-chromatography using epitope-specific immunogen.
Conjugation:	Unconjugated
Storage:	Store at -20°C as received.
Stability:	Stable for 12 months from date of receipt.
Gene Name:	Dnaj heat shock protein family (Hsp40) member B1
Database Link:	NP_006136 Entrez Gene 81489 MouseEntrez Gene 361384 RatEntrez Gene 3337 Human P25685
Synonyms:	Hdj1; Hsp40; HSPF1; RSPH16B; Sis1
Note:	HSP40 antibody detects endogenous levels of total HSP40 protein.



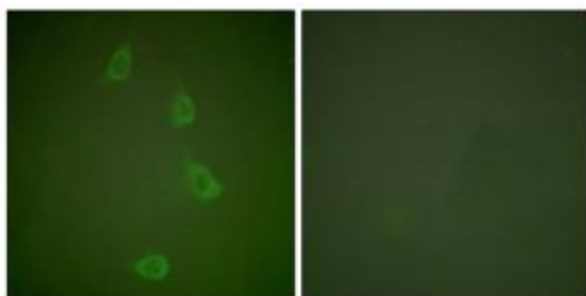
[View online »](#)

Product images:

Western blot analysis of extracts from COLO205 cells, using HSP40 antibody (#TA312301).The lane on the right is treated with the synthesized peptide.



Immunohistochemical analysis of paraffin-embedded human lung carcinoma tissue using HSP40 antibody (#TA312301).The picture on the right is treated with the synthesized peptide.



Immunofluorescence analysis of NIH/3T3 cells, using HSP40 antibody (#TA312301).The picture on the right is treated with the synthesized peptide.