

Product datasheet for **TA312298S**

YAP1 Rabbit Polyclonal Antibody

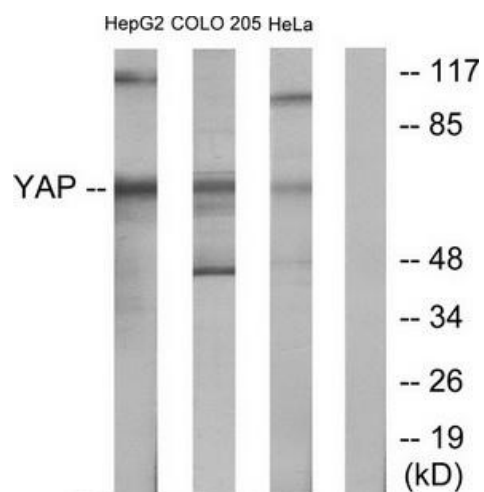
Product data:

Product Type:	Primary Antibodies
Applications:	WB
Recommended Dilution:	WB: 1:500~1:3000, ELISA: 1:5000
Reactivity:	Human, Mouse, Rat
Host:	Rabbit
Isotype:	IgG
Clonality:	Polyclonal
Immunogen:	The antiserum was produced against synthesized peptide derived from internal of human YAP.
Formulation:	Phosphate buffered saline (without Mg ²⁺ and Ca ²⁺), pH 7.4, 150mM NaCl, 0.02% sodium azide and 50% glycerol.
Concentration:	lot specific
Purification:	The antibody was affinity-purified from rabbit antiserum by affinity-chromatography using epitope-specific immunogen.
Conjugation:	Unconjugated
Storage:	Store at -20°C as received.
Stability:	Stable for 12 months from date of receipt.
Gene Name:	Yes associated protein 1
Database Link:	NP_006097 Entrez Gene 22601 Mouse Entrez Gene 363014 Rat Entrez Gene 10413 Human P46937
Synonyms:	COB1; YAP; YAP2; YAP65; YKI
Note:	YAP antibody detects endogenous levels of total YAP protein.
Protein Families:	Druggable Genome



[View online »](#)

Product images:



Western blot analysis of extracts from HepG2 cells, COLO205 cells and HeLa cells, using YAP antibody. The lane on the right is treated with the synthesized peptide.