

Product datasheet for **TA312296**

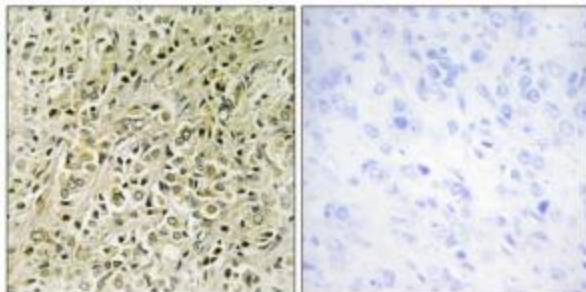
DLC1 Rabbit Polyclonal Antibody

Product data:

Product Type:	Primary Antibodies
Applications:	IF, IHC
Recommended Dilution:	IHC: 1:50~1:100, IF: 1:100~1:500, ELISA: 1:10000
Reactivity:	Human, Mouse, Rat
Host:	Rabbit
Isotype:	IgG
Clonality:	Polyclonal
Immunogen:	The antiserum was produced against synthesized peptide derived from internal of human RHG07.
Formulation:	Phosphate buffered saline (without Mg ²⁺ and Ca ²⁺), pH 7.4, 150mM NaCl, 0.02% sodium azide and 50% glycerol.
Concentration:	lot specific
Purification:	The antibody was affinity-purified from rabbit antiserum by affinity-chromatography using epitope-specific immunogen.
Conjugation:	Unconjugated
Storage:	Store at -20°C as received.
Stability:	Stable for 12 months from date of receipt.
Gene Name:	DLC1 Rho GTPase activating protein
Database Link:	NP_872584 Entrez Gene 50768 Mouse Entrez Gene 58834 Rat Entrez Gene 10395 Human Q96QB1
Synonyms:	ARHGAP7; HP; p122-RhoGAP; STARD12
Note:	RHG07 antibody detects endogenous levels of total RHG07 protein.



[View online »](#)

Product images:

Immunohistochemistry analysis of paraffin-embedded human prostate carcinoma tissue, using RHG07 antibody. The picture on the right is treated with the synthesized peptide.



Immunofluorescence analysis of A549 cells, using RHG07 antibody. The picture on the right is treated with the synthesized peptide.