

Product datasheet for **TA312291**

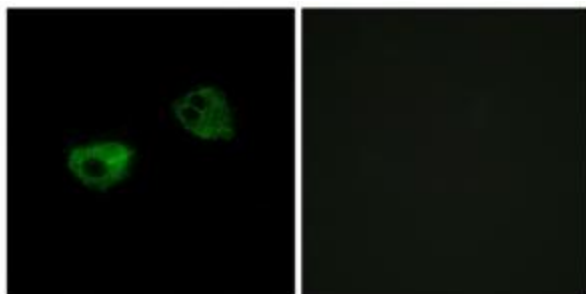
Melatonin Receptor 1A (MTNR1A) Rabbit Polyclonal Antibody

Product data:

Product Type:	Primary Antibodies
Applications:	IF
Recommended Dilution:	IF: 1:100~1:500, ELISA: 1:5000
Reactivity:	Human, Mouse, Rat
Host:	Rabbit
Isotype:	IgG
Clonality:	Polyclonal
Immunogen:	The antiserum was produced against synthesized peptide derived from internal of human MTR1A.
Formulation:	Phosphate buffered saline (without Mg ²⁺ and Ca ²⁺), pH 7.4, 150mM NaCl, 0.02% sodium azide and 50% glycerol.
Concentration:	lot specific
Purification:	The antibody was affinity-purified from rabbit antiserum by affinity-chromatography using epitope-specific immunogen.
Conjugation:	Unconjugated
Storage:	Store at -20°C as received.
Stability:	Stable for 12 months from date of receipt.
Gene Name:	melatonin receptor 1A
Database Link:	NP_005949 Entrez Gene 17773 Mouse Entrez Gene 114211 Rat Entrez Gene 4543 Human P48039
Synonyms:	MEL-1A-R; MT1
Note:	MTR1A antibody detects endogenous levels of total MTR1A protein.
Protein Families:	Druggable Genome, GPCR, Transmembrane
Protein Pathways:	Neuroactive ligand-receptor interaction



[View online »](#)

Product images:

Immunofluorescence analysis of HepG2 cells, using MTR1A antibody. The picture on the right is treated with the synthesized peptide.