

## Product datasheet for **TA312280**

### Tau (MAPT) Rabbit Polyclonal Antibody

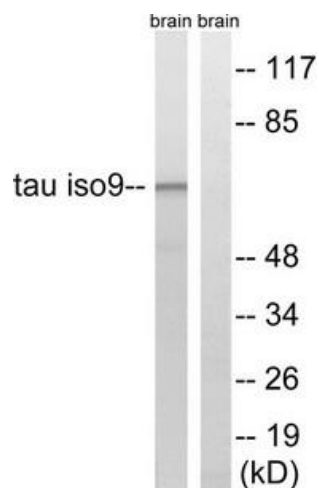
#### Product data:

|                       |   |
|-----------------------|---|
| Product Type:         | Primary Antibodies  |
| Applications:         | WB  |
| Recommended Dilution: | WB: 1:500~1:3000, ELISA: 1:10000  |
| Reactivity:           | Human, Mouse, Rat   |
| Host:                 | Rabbit  |
| Isotype:              | IgG   |
| Clonality:            | Polyclonal  |
| Immunogen:            | The antiserum was produced against synthesized non-phosphopeptide derived from human Tau around the phosphorylation site of threonine 534/217 (L-P-TP-P-P).                 |
| Formulation:          | Phosphate buffered saline (without Mg <sup>2+</sup> and Ca <sup>2+</sup> ), pH 7.4, 150mM NaCl, 0.02% sodium azide and 50% glycerol.  |
| Concentration:        | lot specific  |
| Purification:         | The antibody was affinity-purified from rabbit antiserum by affinity-chromatography using epitope-specific immunogen.   |
| Conjugation:          | Unconjugated  |
| Storage:              | Store at -20°C as received.   |
| Stability:            | Stable for 12 months from date of receipt.  |
| Gene Name:            | microtubule associated protein tau  |
| Database Link:        | <a href="#">NP_005901</a><br><a href="#">Entrez Gene 17762 Mouse</a> <a href="#">Entrez Gene 29477 Rat</a> <a href="#">Entrez Gene 4137 Human</a><br><a href="#">P10636</a> |
| Synonyms:             | DDPAC; FTDP-17; MAPTL; MSTD; MTBT1; MTBT2; PPND; PPP1R103; TAU  |
| Note:                 | Tau (Ab-534/217) antibody detects endogenous levels of total Tau protein.   |
| Protein Families:     | Druggable Genome  |
| Protein Pathways:     | Alzheimer's disease, MAPK signaling pathway   |



[View online »](#)

## Product images:



Western blot analysis of extracts from rat brain cells, using Tau (Ab-534/217) antibody. The lane on the right is treated with the synthesized peptide.